

PIANO INTERRATO
SCALA 1:300
AGG. 07 GIUGNO 2023



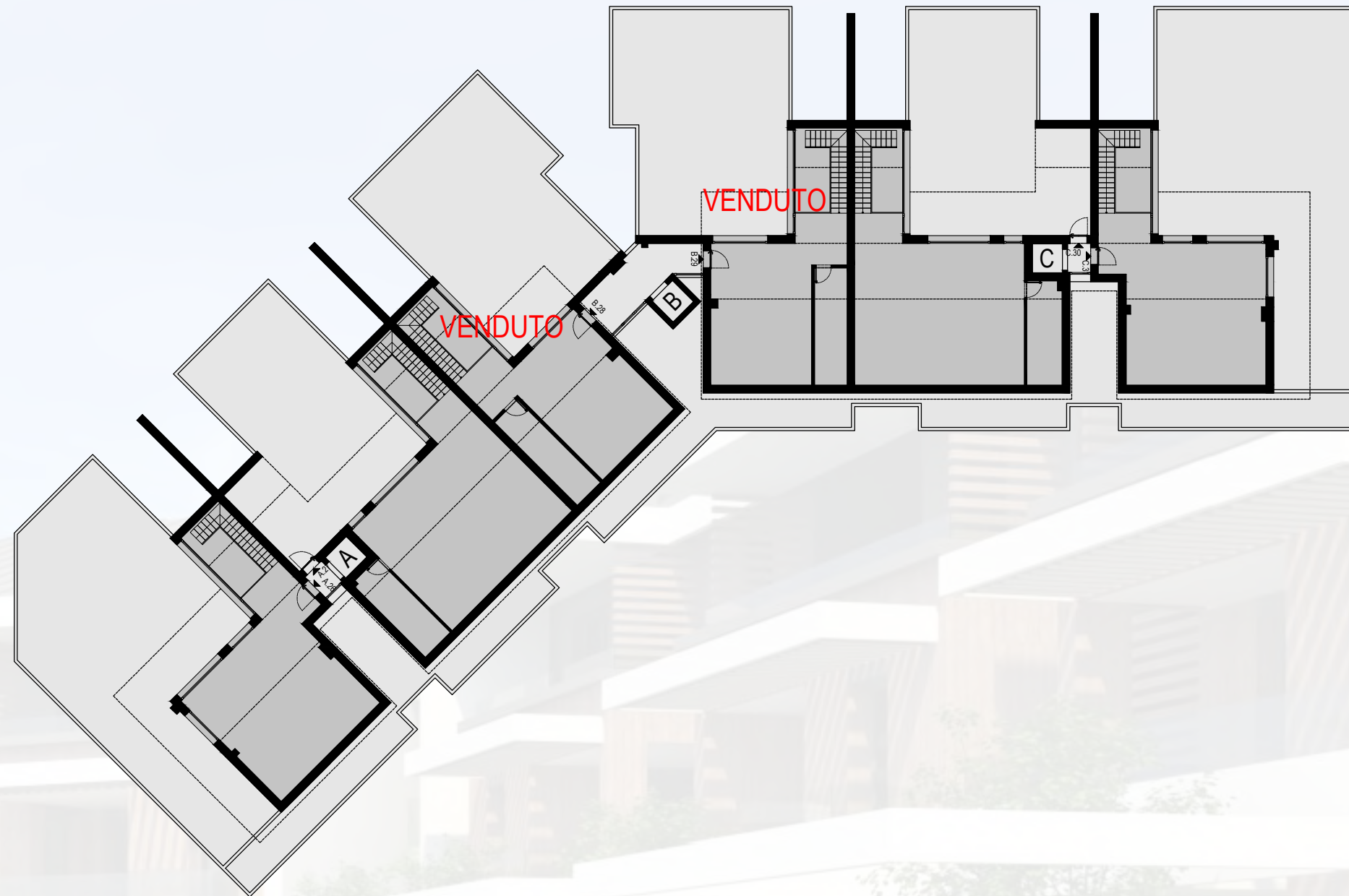
PIANO TERRA
SCALA 1:300
AGG. 07 GIUGNO 2023



PIANO PRIMO
SCALA 1:300
AGG. 07 GIUGNO 2023



PIANO SECONDO
SCALA 1:300
AGG. 07 GIUGNO 2023



PIANO ATTICO
SCALA 1:300
AGG. 07 GIUGNO 2023

ALLOGGIO 1

superficie commerciale: 170.51 mq
 alloggio: 137.08 mq x 100% = 137.08 mq
 port/terr.: 36.87 mq x 50% = 18.44 mq
 giardino: 249.90 mq x 6% = 14.99 mq

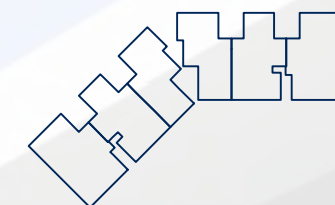
abbinato con BOX 30



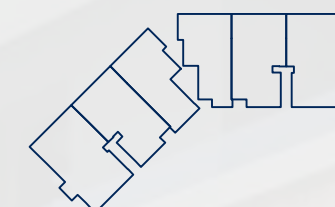
PIANO TERRA



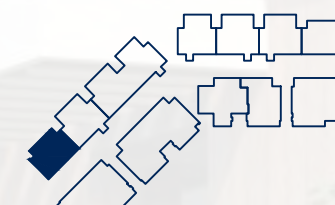
PIANO PRIMO



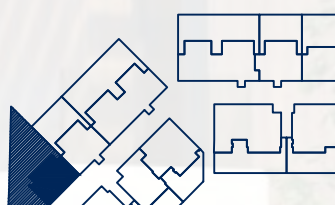
PIANO ATTICO



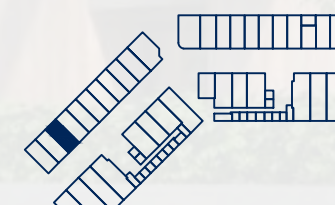
PIANO SECONDO



PIANO PRIMO



PIANO TERRA



PIANO INTERRATO



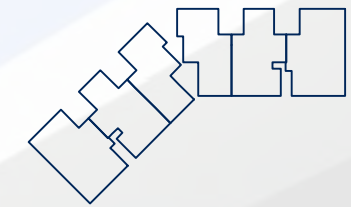
PIANO TERRA

SCALA 1:100

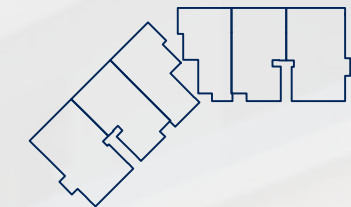
AGG. 07 GIUGNO 2023

ALLOGGIO 2

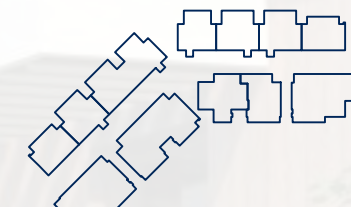
superficie commerciale: 90.69 mq
 alloggio: 69.97 mq x 100% = 69.97 mq
 port/terr.: 25.38 mq x 50% = 12.69 mq
 giardino: 80.28 mq x 10% = 8.03 mq



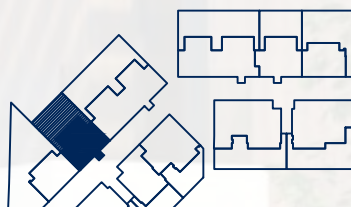
PIANO ATTICO



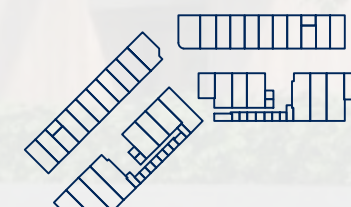
PIANO SECONDO



PIANO PRIMO



PIANO TERRA



PIANO INTERRATO



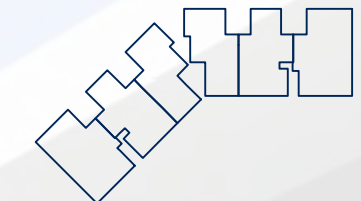
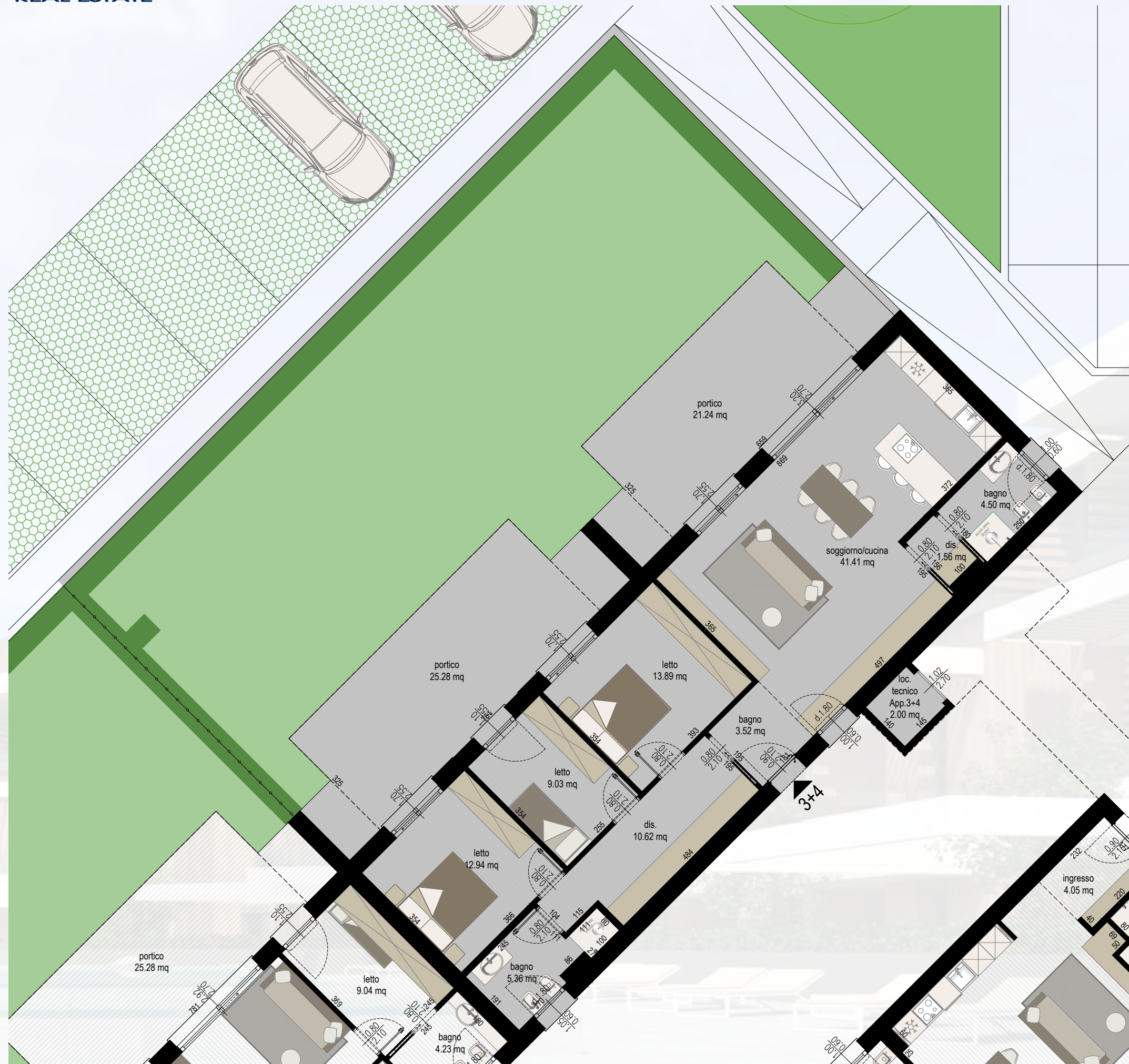
PIANO TERRA

SCALA 1:100

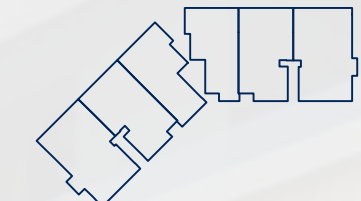
AGG. 07 GIUGNO 2023

ALLOGGIO 3+4

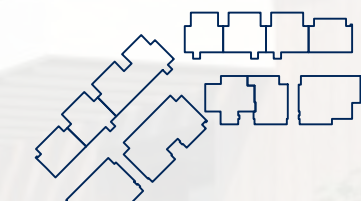
superficie commerciale: 164.90 mq
 alloggio: 130.70 mq x 100% = 130.70 mq
 port/terr.: 46.78 mq x 50% = 23.39 mq
 giardino: 154.38 mq x 7% = 10.81 mq



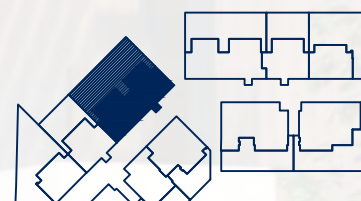
PIANO ATTICO



PIANO SECONDO



PIANO PRIMO



PIANO TERRA



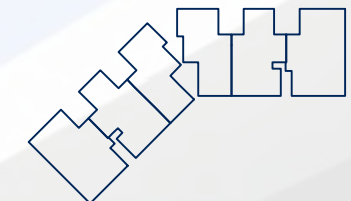
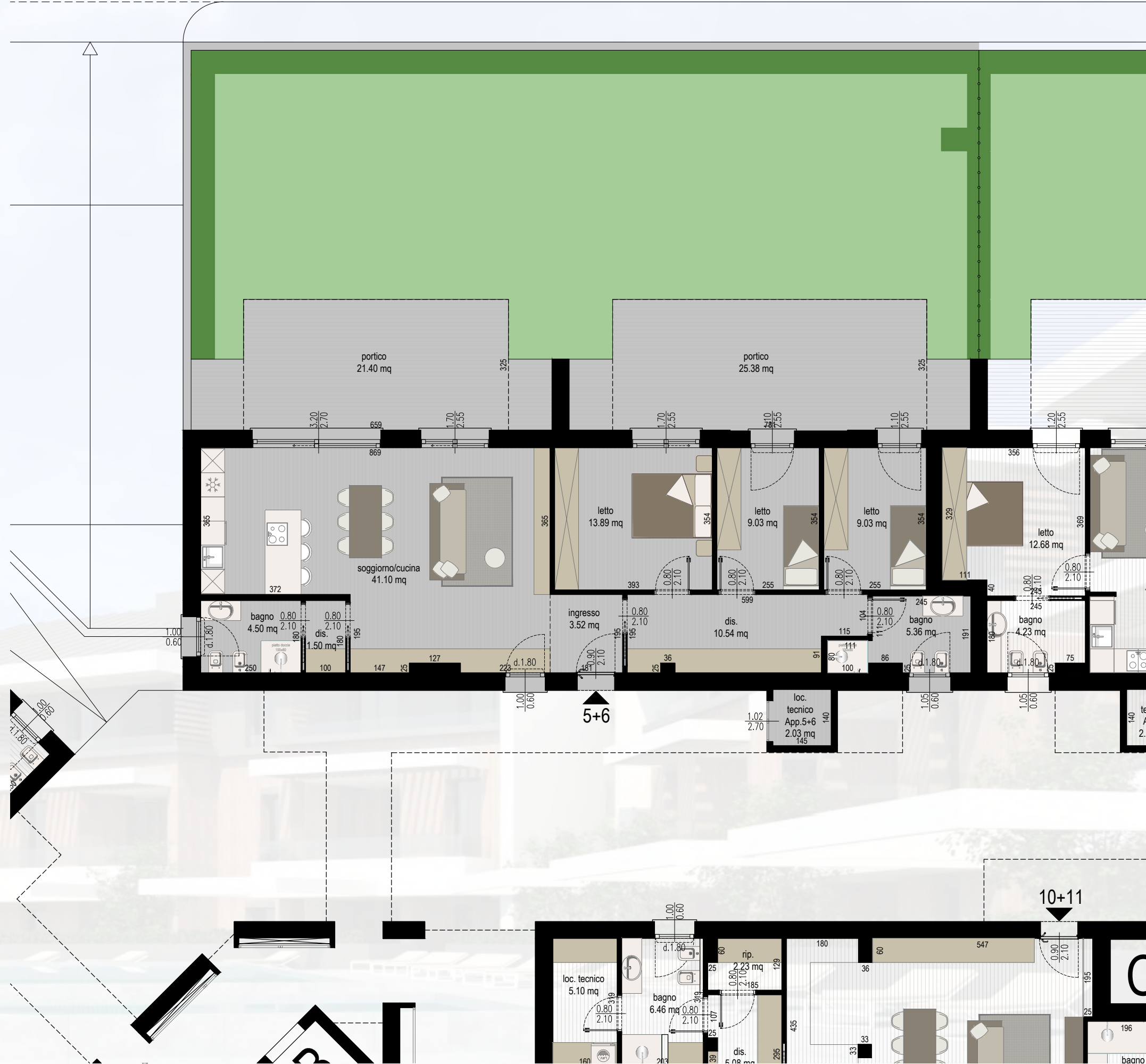
PIANO INTERRATO



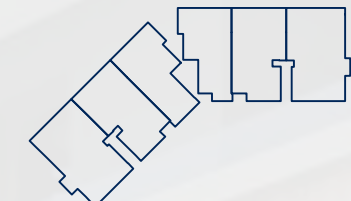
PIANO TERRA
 SCALA 1:100
 AGG. 07 GIUGNO 2023

ALLOGGIO 5+6

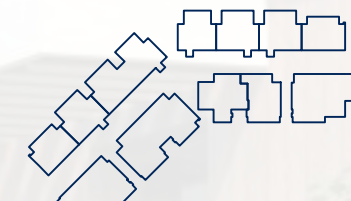
superficie commerciale: 159.85 mq
 alloggio: 126.37 mq x 100% = 126.37 mq
 port/terr.: 46.78 mq x 50% = 23.39 mq
 giardino: 144.09 mq x 7% = 10.89 mq



PIANO ATTICO



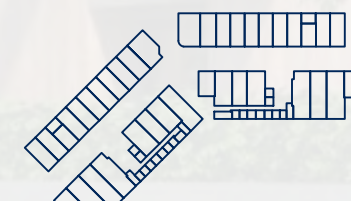
PIANO SECONDO



PIANO PRIMO



PIANO TERRA



PIANO INTERRATO

PIANO TERRA

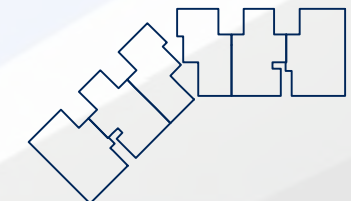
SCALA 1:100

AGG. 07 GIUGNO 2023

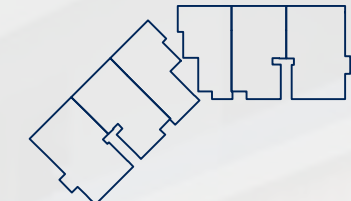


ALLOGGIO 7

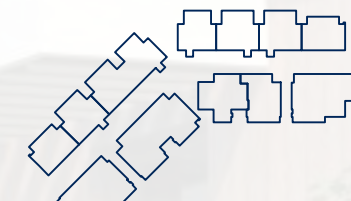
superficie commerciale: 94.49 mq
 alloggio: 74.31 mq x 100% = 74.31 mq
 port/terr.: 25.38 mq x 50% = 12.69 mq
 giardino: 74.88 mq x 10% = 7.49 mq



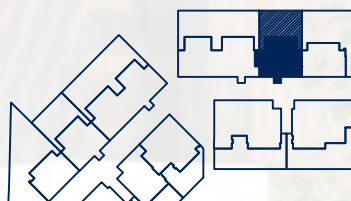
PIANO ATTICO



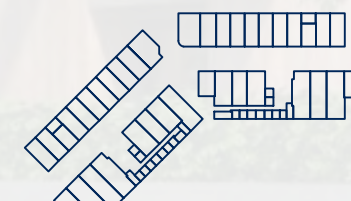
PIANO SECONDO



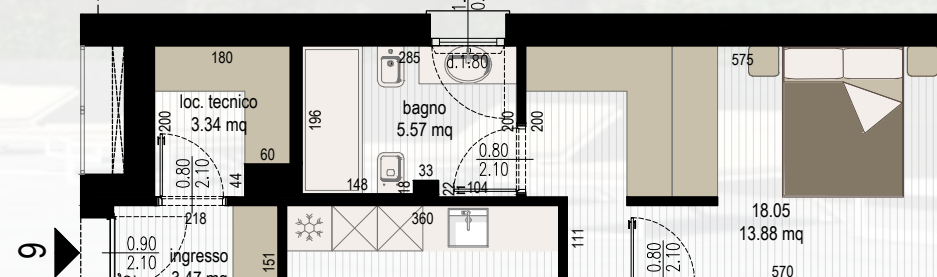
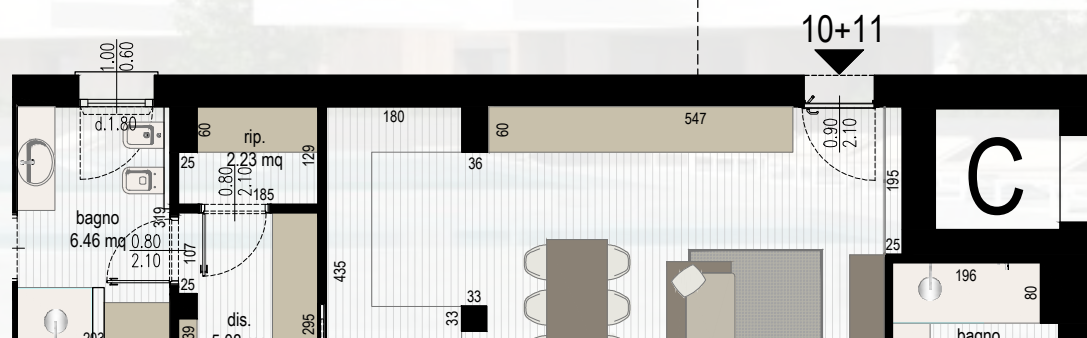
PIANO PRIMO



PIANO TERRA



PIANO INTERRATO



PIANO TERRA

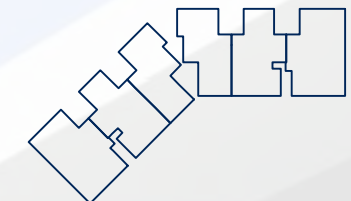
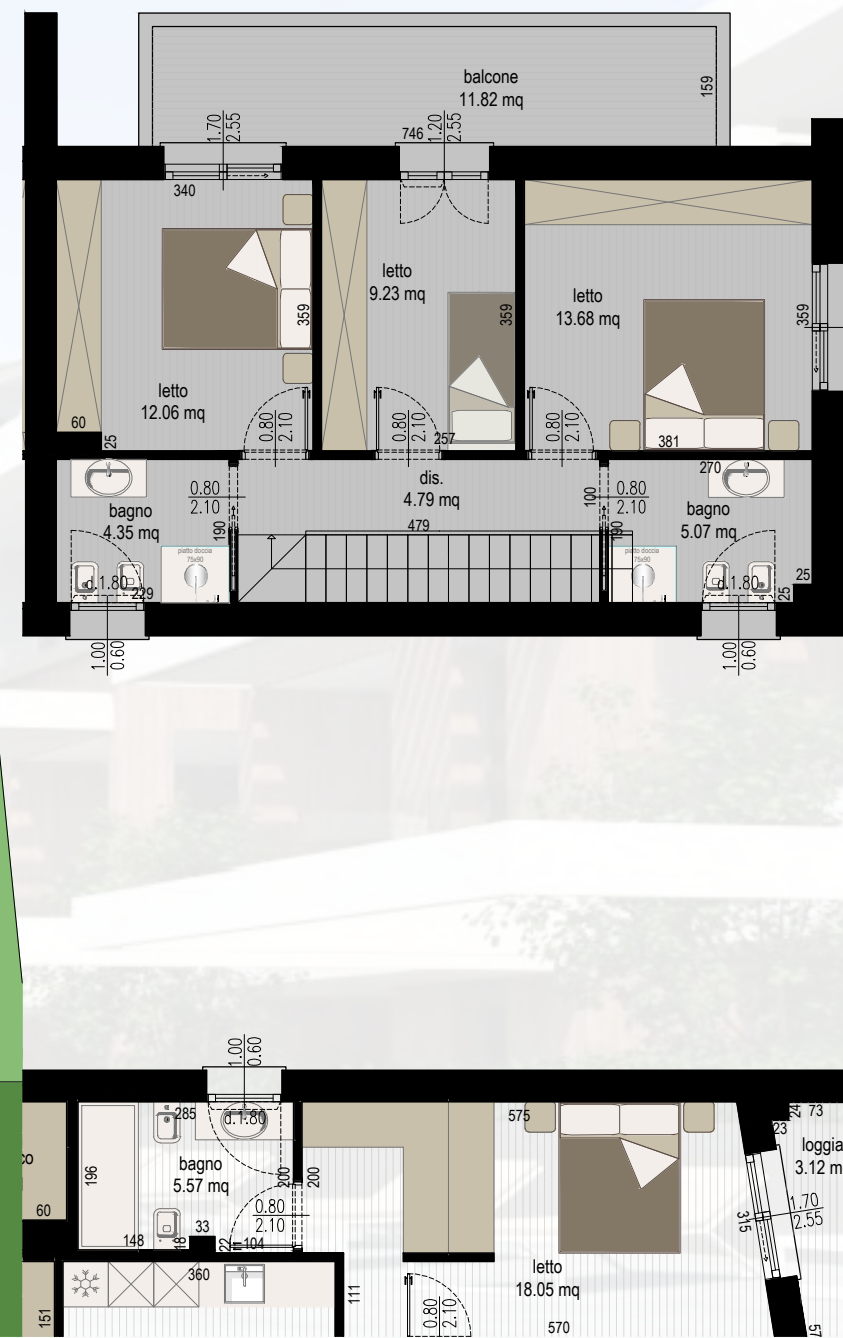
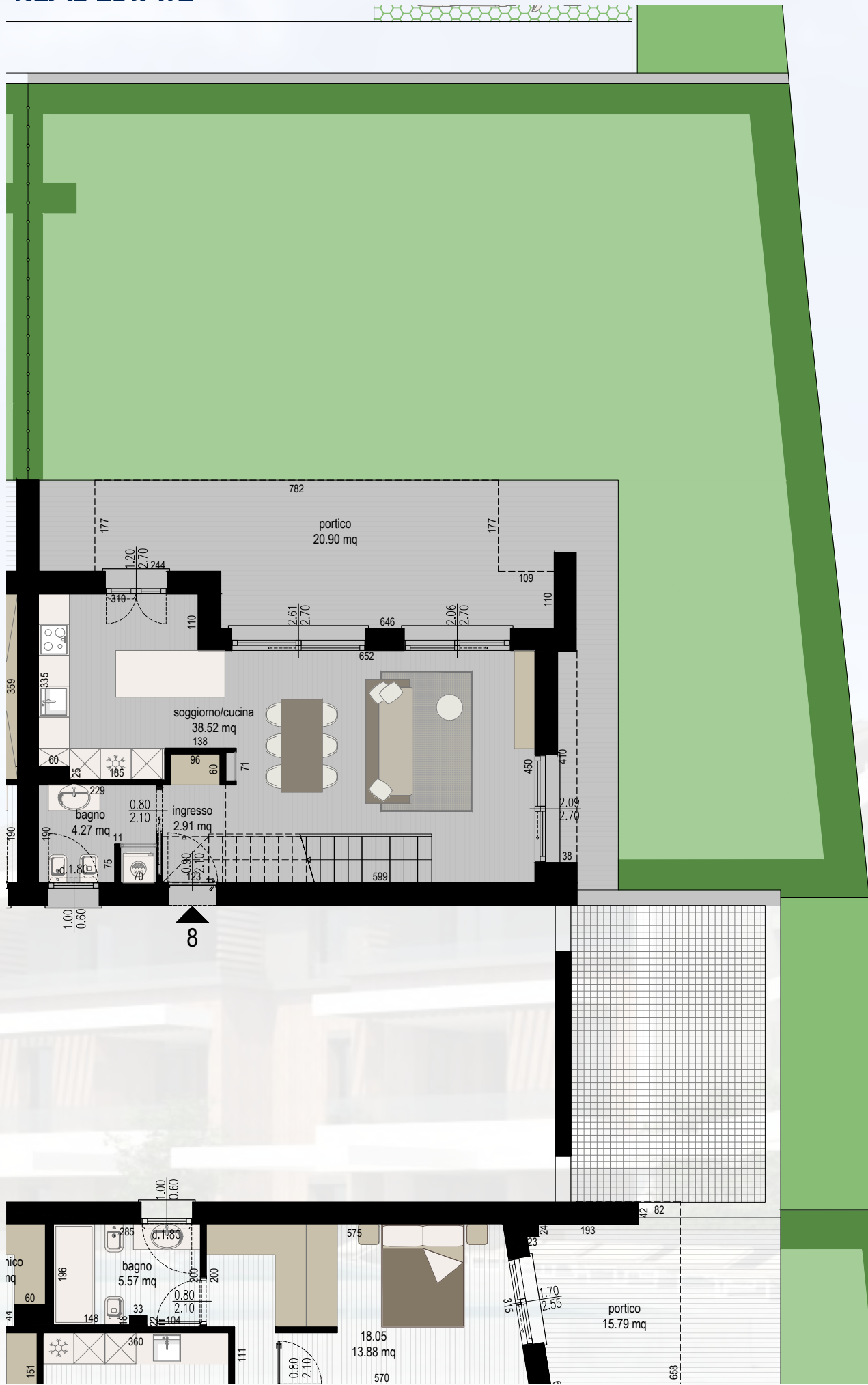
SCALA 1:100

AGG. 07 GIUGNO 2023

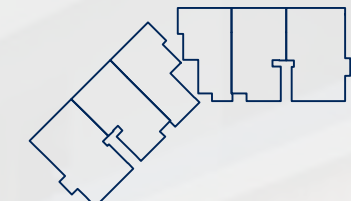
ALLOGGIO 8

superficie commerciale: 166.12 mq
 alloggio: 137.02 mq x 100% = 137.02 mq
 port/terr.: 36.87 mq x 50% = 18.44 mq
 giardino: 166.70 mq x 7% = 11.66 mq

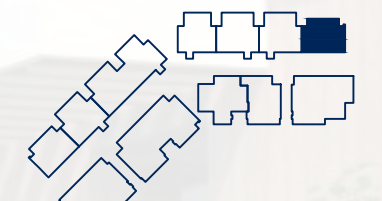
abbinato con BOX 9



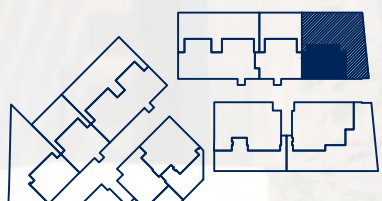
PIANO ATTICO



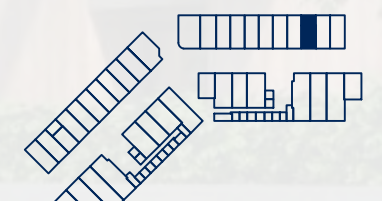
PIANO SECONDO



PIANO PRIMO



PIANO TERRA



PIANO INTERRATO



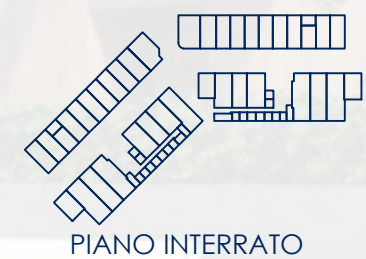
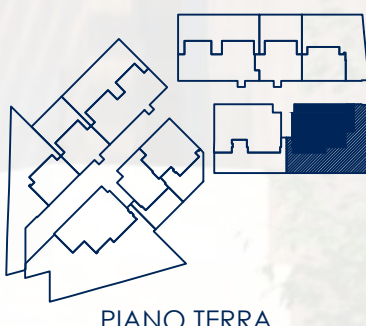
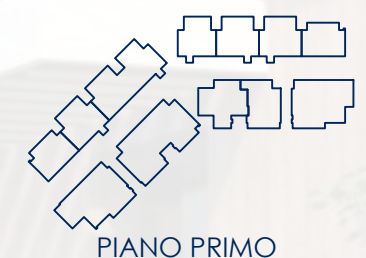
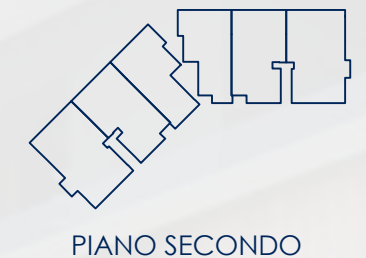
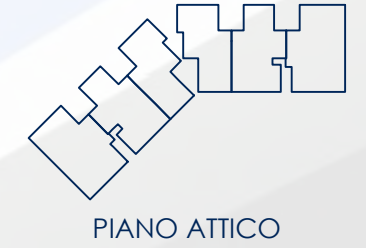
PIANO TERRA

SCALA 1:100

AGG. 07 GIUGNO 2023

ALLOGGIO 9

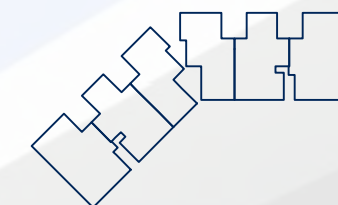
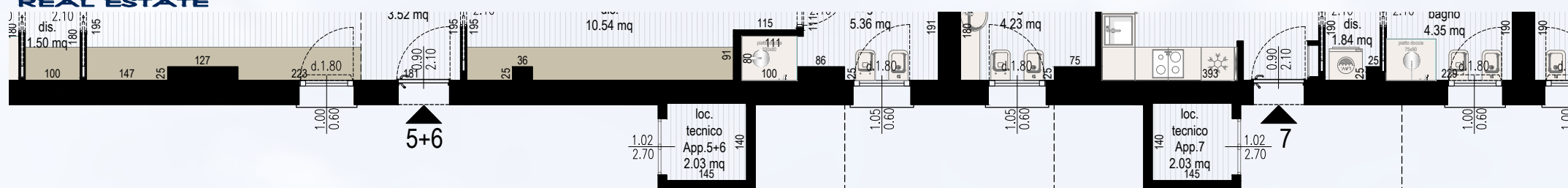
superficie commerciale: 151.81 mq
 alloggio: 118.60 mq x 100% = 118.60 mq
 port/terr.: 39.94 mq x 50% = 19.97 mq
 giardino: 189.08 mq x 7% = 13.24 mq



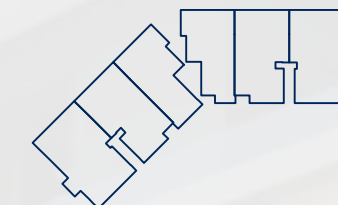
PIANO TERRA
 SCALA 1:100
 AGG. 07 GIUGNO 2023

ALLOGGIO 10+11

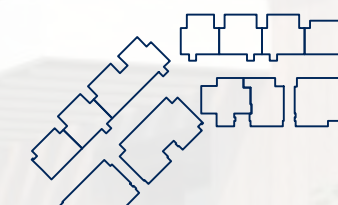
superficie commerciale: 165.14 mq
 alloggio: 132.95 mq x 100% = 132.95 mq
 port/terr.: 43.35 mq x 50% = 21.68 mq
 giardino: 105.17 mq x 10% = 10.51 mq



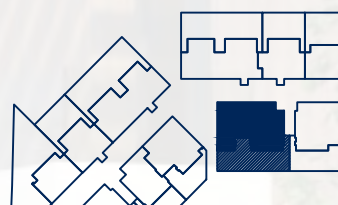
PIANO ATTICO



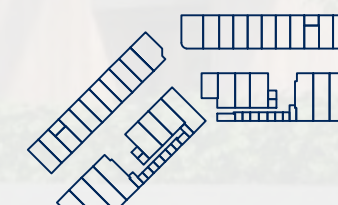
PIANO SECONDO



PIANO PRIMO



PIANO TERRA



PIANO INTERRATO



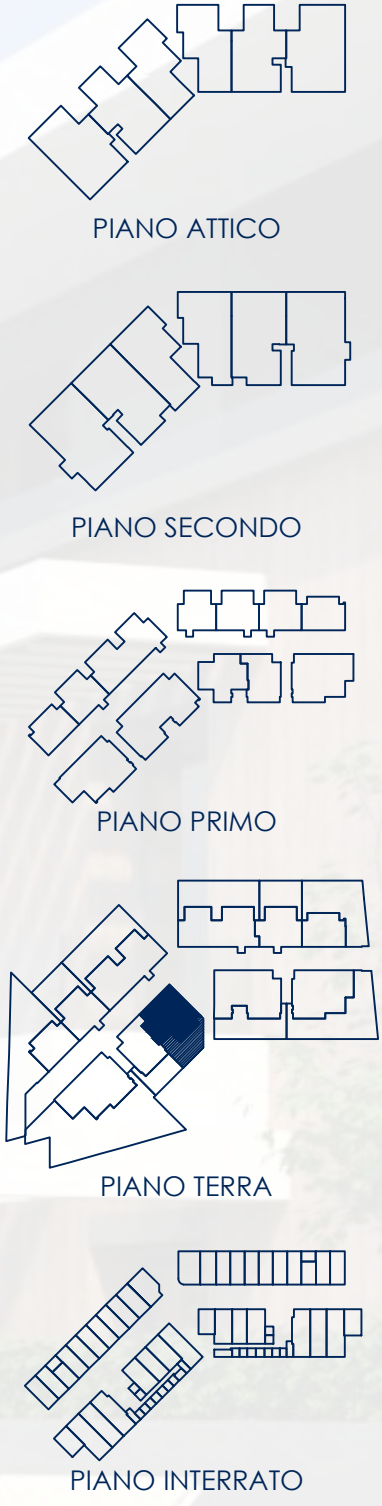
PIANO TERRA

SCALA 1:100

AGG. 07 GIUGNO 2023

ALLOGGIO 12.1

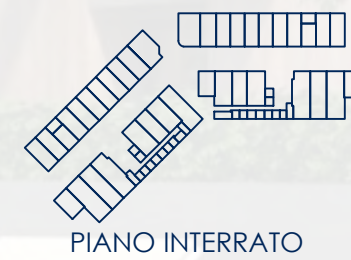
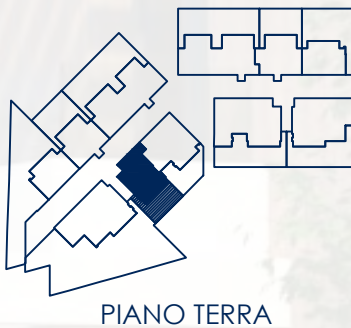
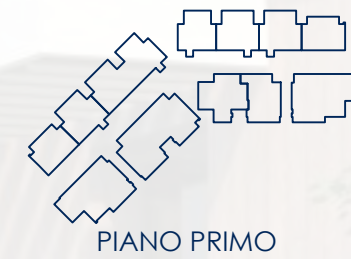
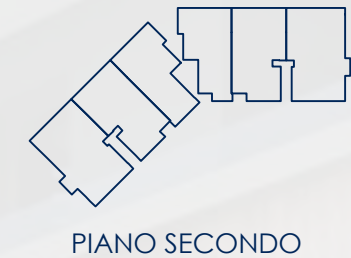
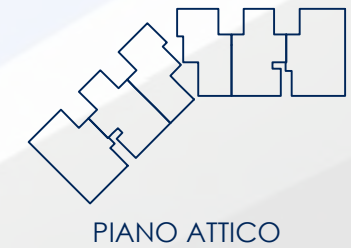
superficie commerciale: 118.17 mq
 alloggio: 100.02 mq x 100% = 100.02 mq
 port/terr.: 24.15 mq x 50% = 12.08 mq
 giardino: 60.70 mq x 10% = 6.07 mq



PIANO TERRA
 SCALA 1:100
 AGG. 07 GIUGNO 2023

ALLOGGIO 12.2

superficie commerciale: 87.06 mq
 alloggio: 68.80 mq x 100% = 68.80 mq
 port/terr.: 26.03 mq x 50% = 13.02 mq
 giardino: 52.46 mq x 10% = 5.24 mq



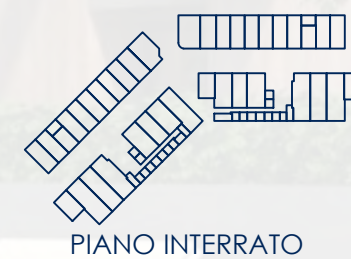
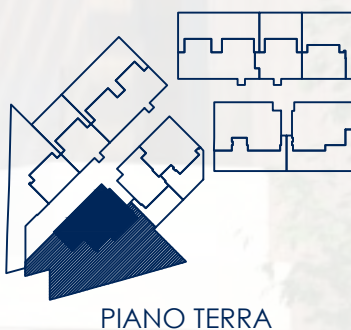
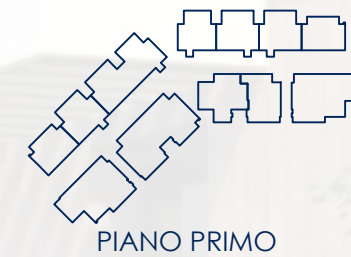
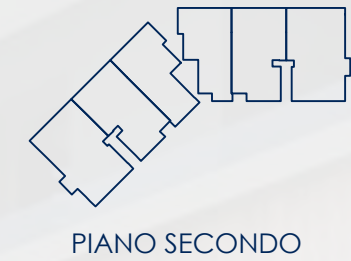
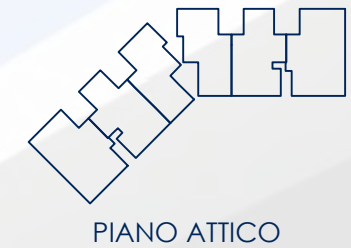
PIANO TERRA

SCALA 1:100

AGG. 07 GIUGNO 2023

ALLOGGIO 13

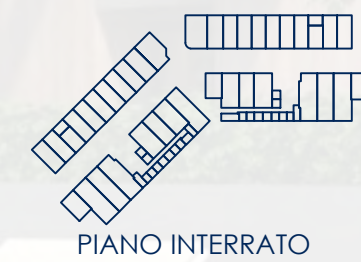
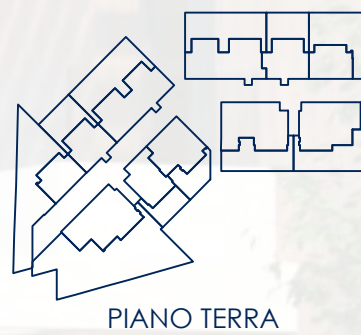
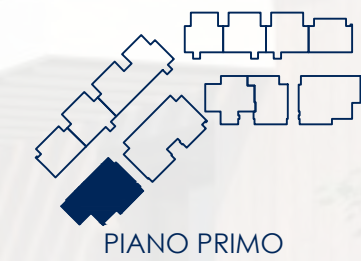
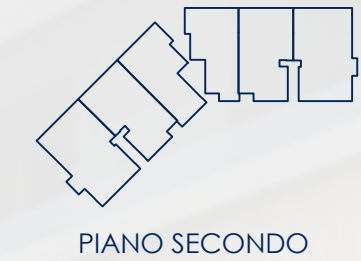
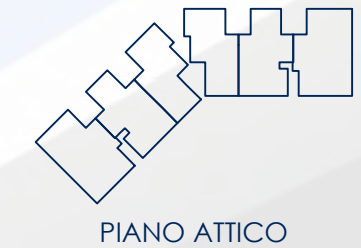
superficie commerciale: 167.19 mq
 alloggio: 124.29 mq x 100% = 124.29 mq
 port/terr.: 47.03 mq x 50% = 23.52 mq
 giardino: 387.77 mq x 5% = 19.38 mq



PIANO TERRA
 SCALA 1:100
 AGG. 07 GIUGNO 2023

ALLOGGIO A.14

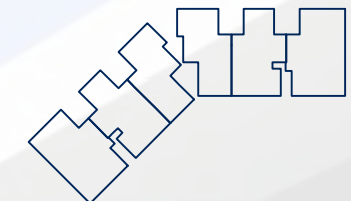
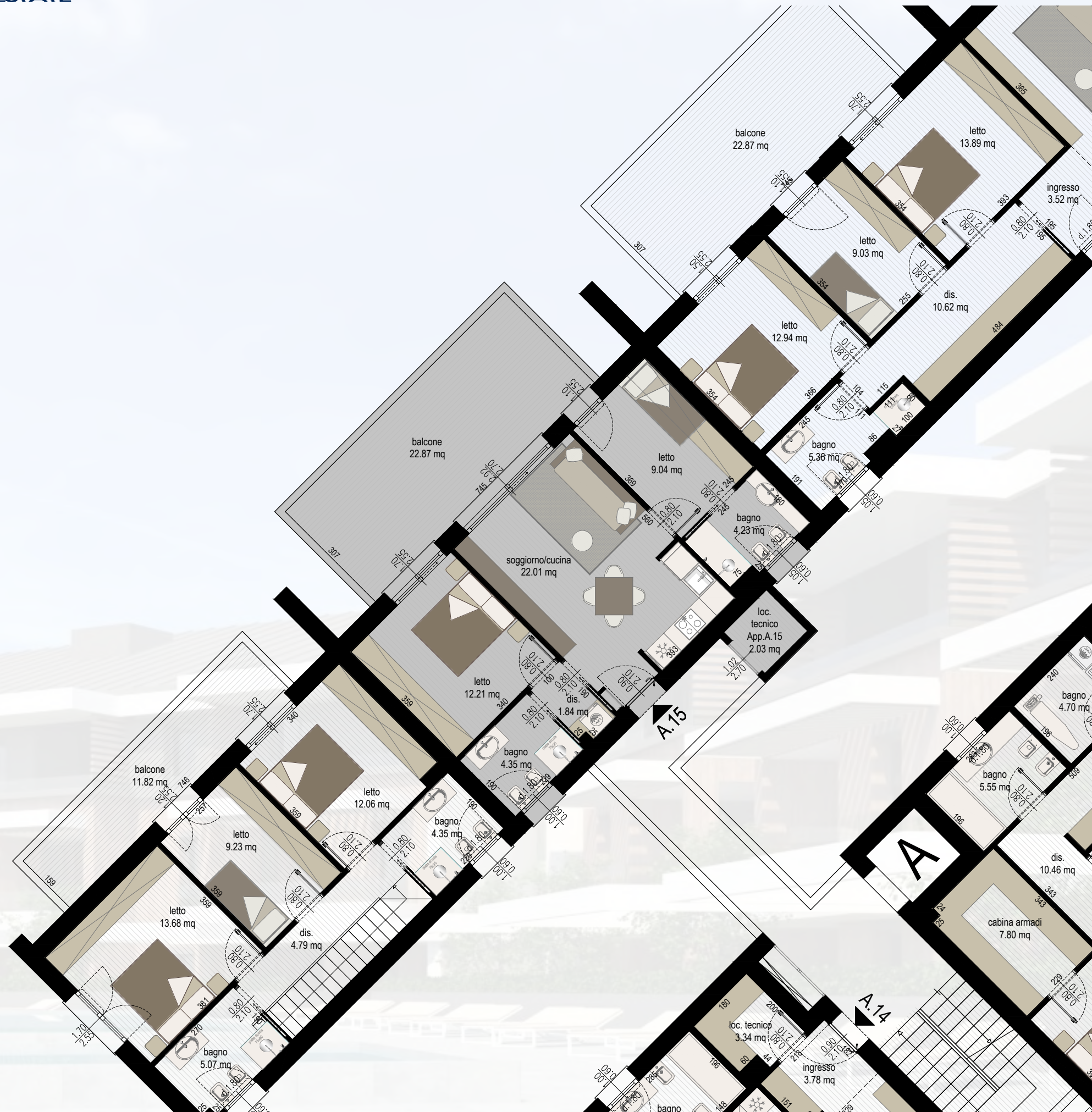
superficie commerciale: 147.81 mq
 alloggio: 124.29 mq x 100% = 124.29 mq
 port/terr.: 47.03 mq x 50% = 23.52 mq



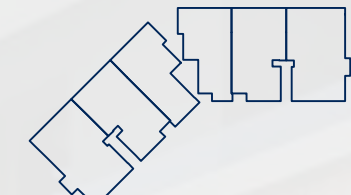
PIANO PRIMO
 SCALA 1:100
 AGG. 07 GIUGNO 2023

ALLOGGIO A.15

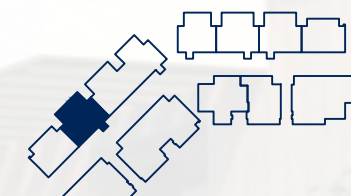
superficie commerciale: 82.67 mq
alloggio: 69.98 mq x 100% = 69.98 mq
port/terr.: 25.38 mq x 50% = 12.69 mq



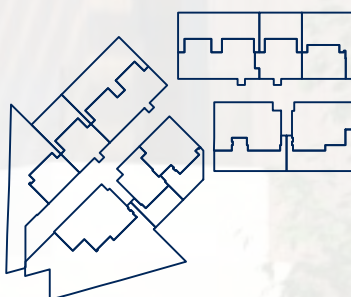
PIANO ATTICO



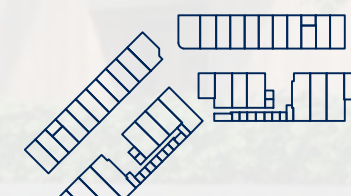
PIANO SECONDO



PIANO PRIMO



PIANO TERRA



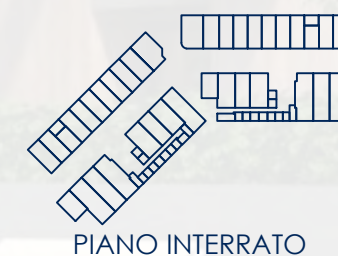
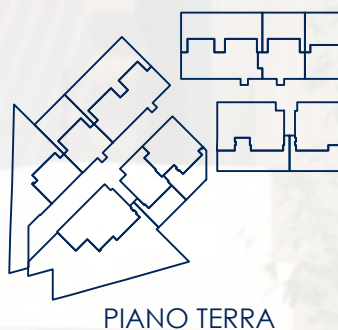
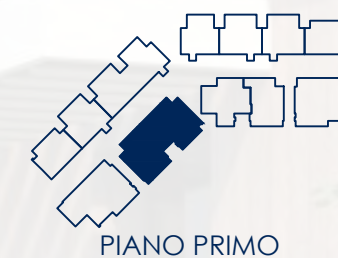
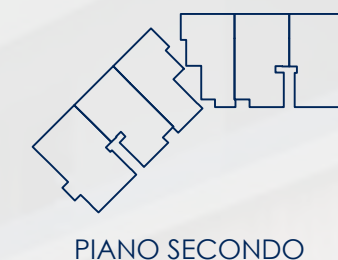
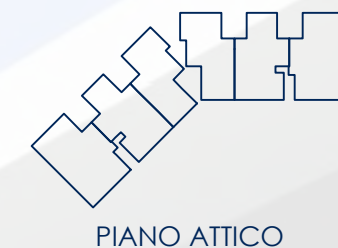
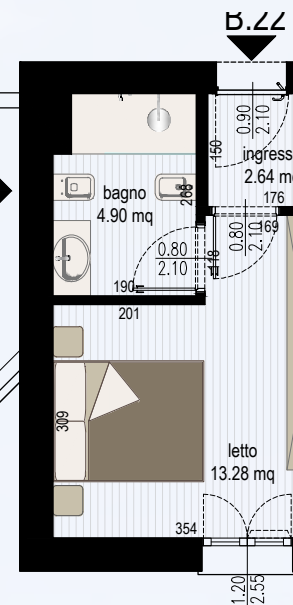
PIANO INTERRATO



PIANO PRIMO
SCALA 1:100
AGG. 07 GIUGNO 2023

ALLOGGIO B+.17+A.16

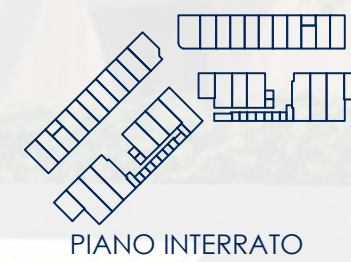
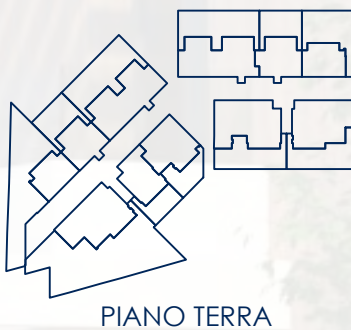
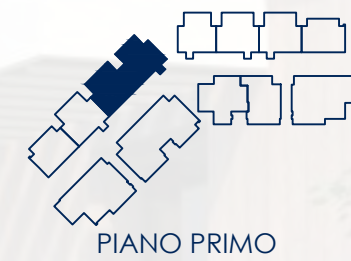
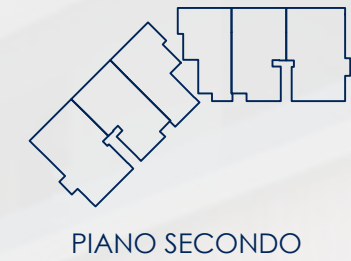
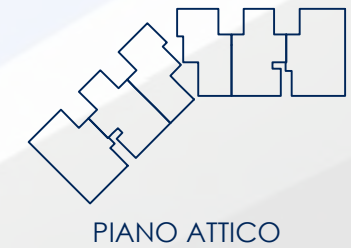
superficie commerciale: 189.94 mq
alloggio: 164.53 mq x 100% = 164.53 mq
port/terr.: 50.82 mq x 50% = 25.41 mq



PIANO PRIMO
SCALA 1:100
AGG. 07 GIUGNO 2023

ALLOGGIO B.18+B.19

superficie commerciale: 154.09 mq
alloggio: 130.70 mq x 100% = 130.70 mq
port/terr.: 46.78 mq x 50% = 23.39 mq



PIANO PRIMO
SCALA 1:100
AGG. 07 GIUGNO 2023

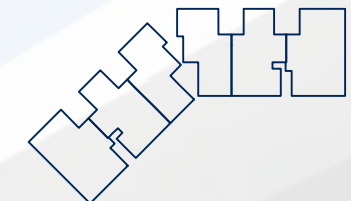
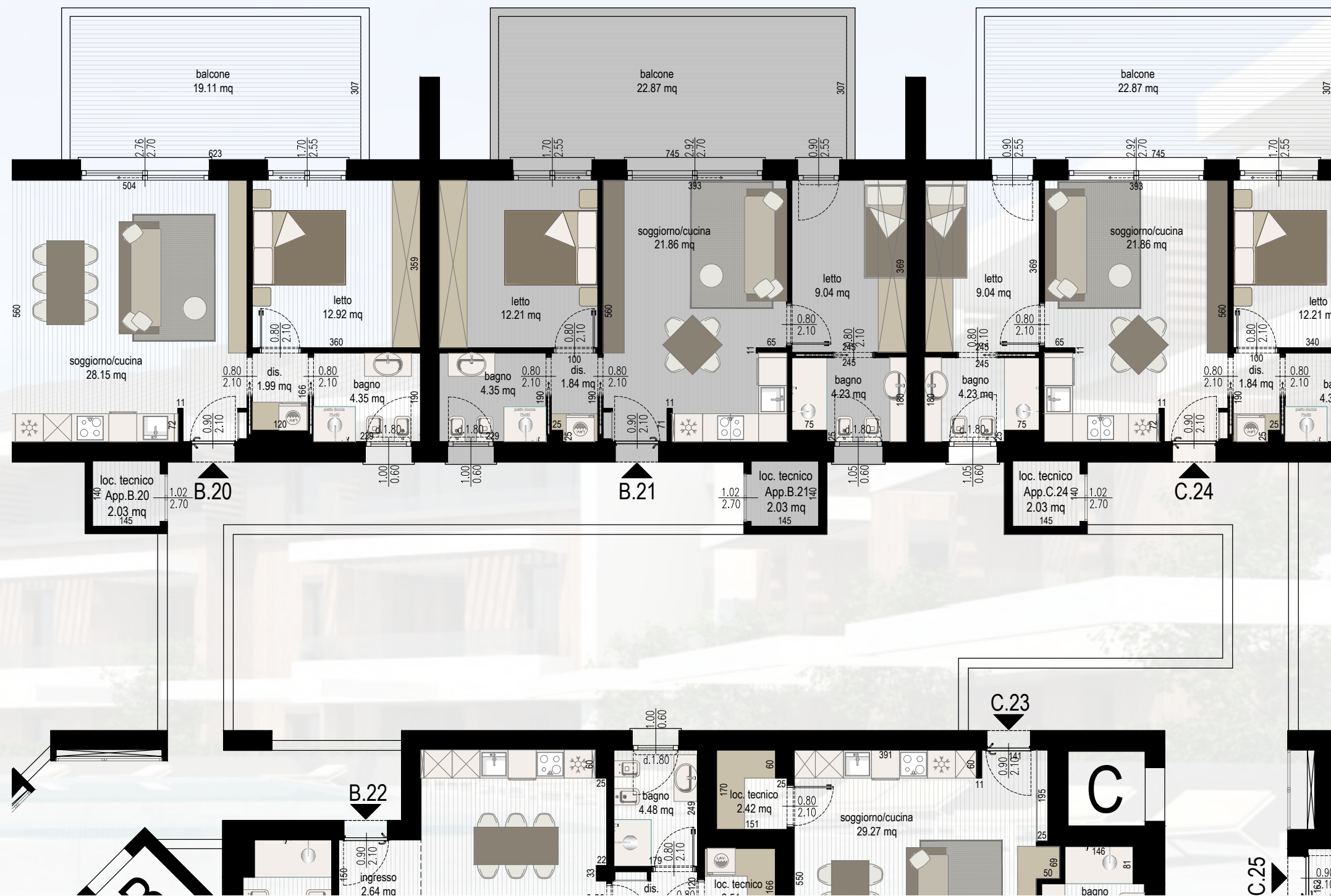
ALLOGGIO B.20

superficie commerciale: 74.06 mq
alloggio: 63.36 mq x 100% = 63.36 mq
port/terr.: 21.40 mq x 50% = 10.70 mq

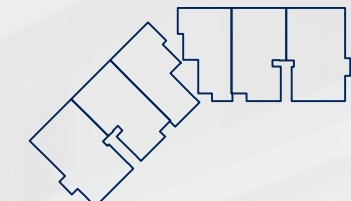


ALLOGGIO B.21

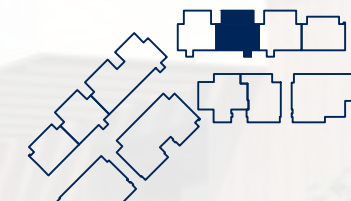
superficie commerciale: 82.66 mq
alloggio: 69.97 mq x 100% = 69.97 mq
port/terr.: 25.38 mq x 50% = 12.69 mq



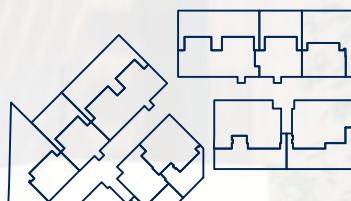
PIANO ATTICO



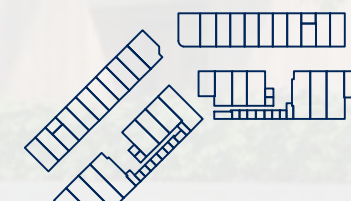
PIANO SECONDO



PIANO PRIMO



PIANO TERRA



PIANO INTERRATO

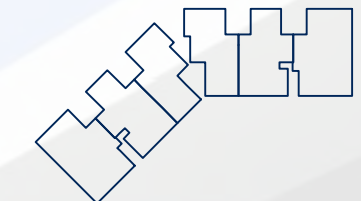


PIANO PRIMO

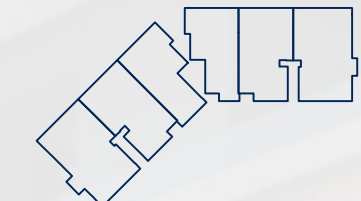
SCALA 1:100

AGG. 07 GIUGNO 2023

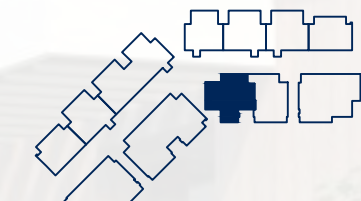
ALLOGGIO B.22
superficie commerciale: 98.71 mq
alloggio: 90.31 mq x 100% = 90.31 mq
port/terr.: 16.79 mq x 50% = 8.40 mq



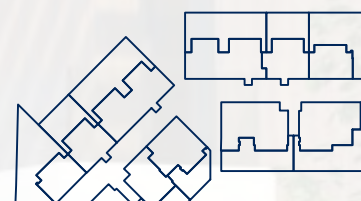
PIANO ATTICO



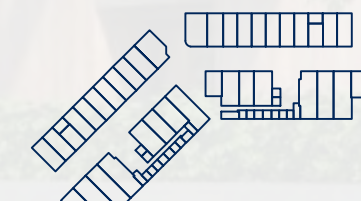
PIANO SECONDO



PIANO PRIMO



PIANO TERRA

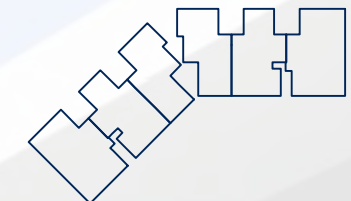


PIANO INTERRATO

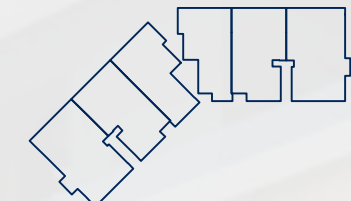


PIANO PRIMO
SCALA 1:100
AGG. 07 GIUGNO 2023

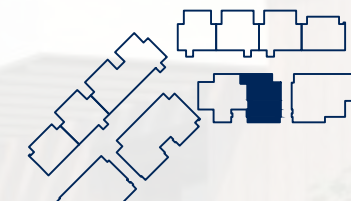
ALLOGGIO C.23
superficie commerciale: 81.80 mq
alloggio: 68.78 mq x 100% = 68.78 mq
port/terr.: 26.03 mq x 50% = 13.02 mq



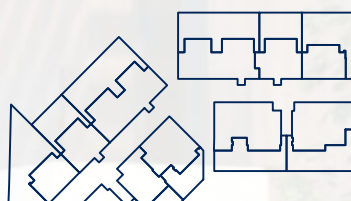
PIANO ATTICO



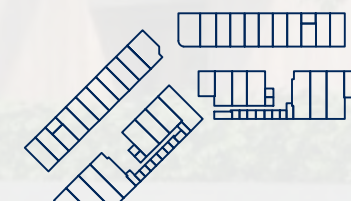
PIANO SECONDO



PIANO PRIMO



PIANO TERRA



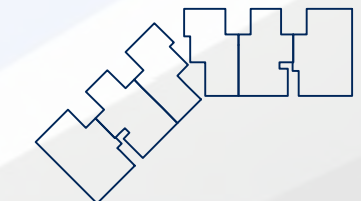
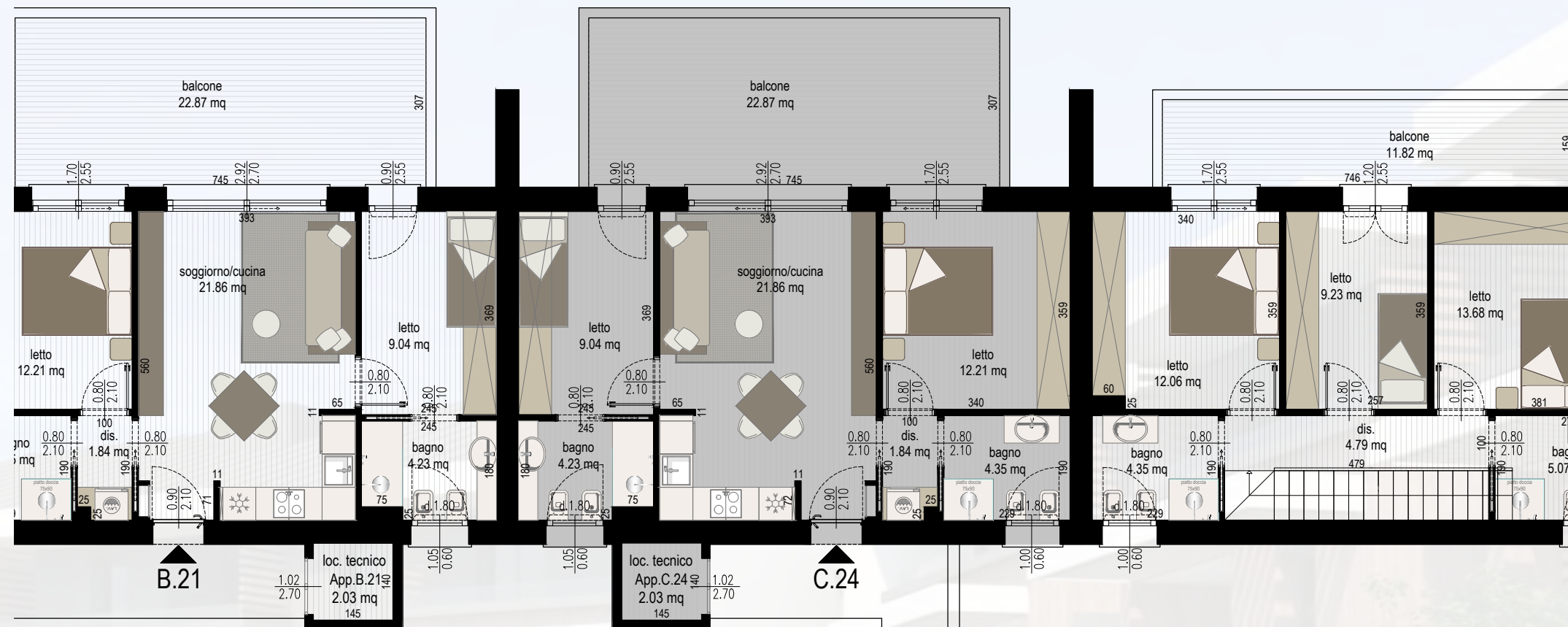
PIANO INTERRATO



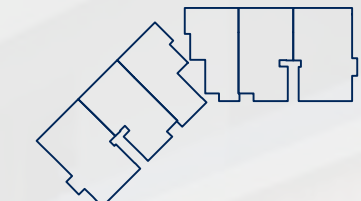
PIANO PRIMO
SCALA 1:100
AGG. 07 GIUGNO 2023

ALLOGGIO C.24

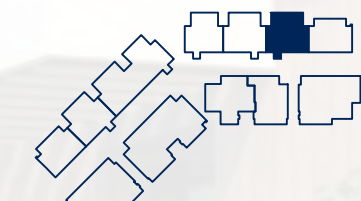
superficie commerciale: 82.66 mq
 alloggio: 69.97 mq x 100% = 69.97 mq
 port/terr.: 25.38 mq x 50% = 12.69 mq



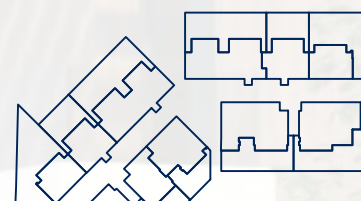
PIANO ATTICO



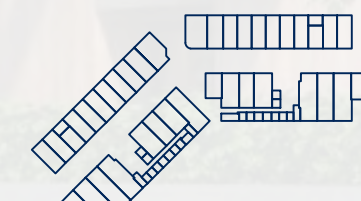
PIANO SECONDO



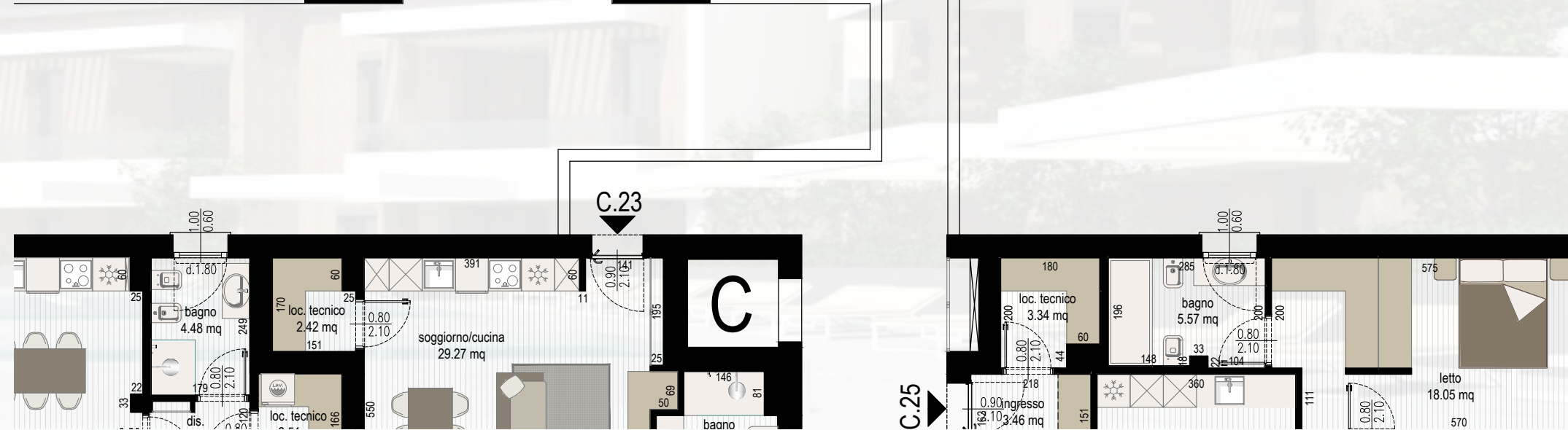
PIANO PRIMO



PIANO TERRA



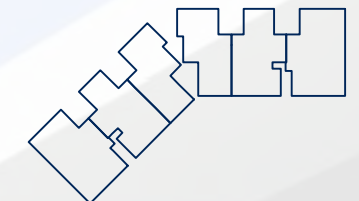
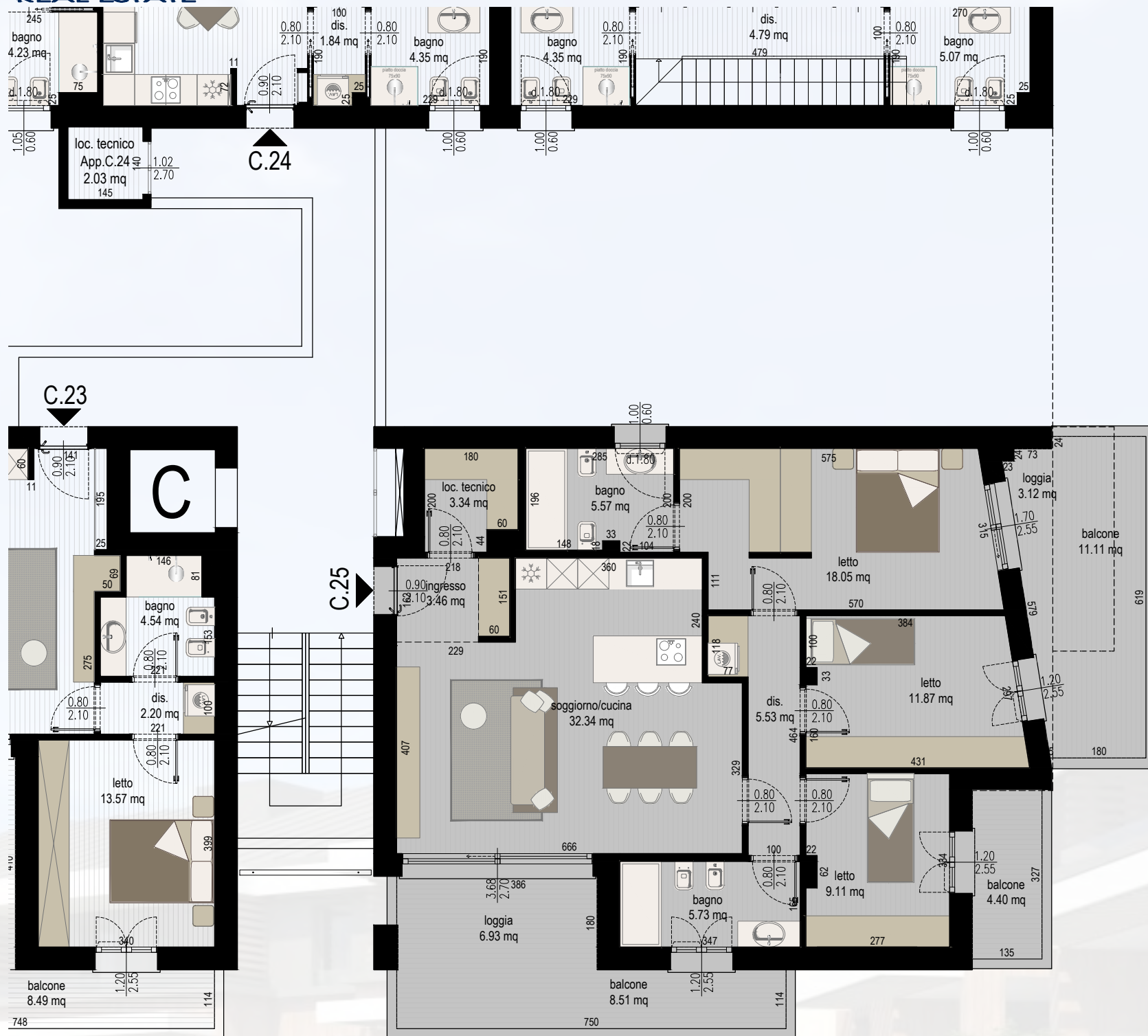
PIANO INTERRATO



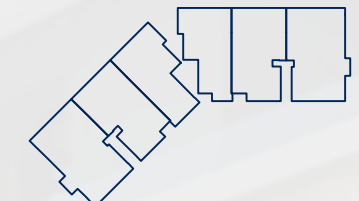
PIANO PRIMO
 SCALA 1:100
 AGG. 07 GIUGNO 2023

ALLOGGIO C.25

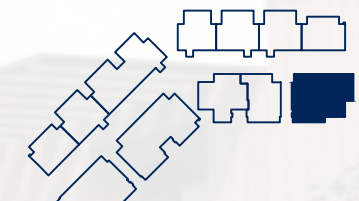
superficie commerciale: 138.57 mq
alloggio: 118.60 mq x 100% = 118.60 mq
port/terr.: 39.94 mq x 50% = 39.94 mq



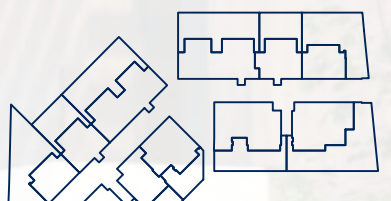
PIANO ATTICO



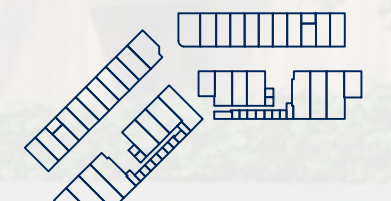
PIANO SECONDO



PIANO PRIMO



PIANO TERRA



PIANO INTERRATO



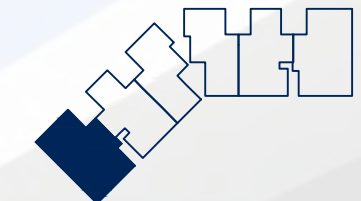
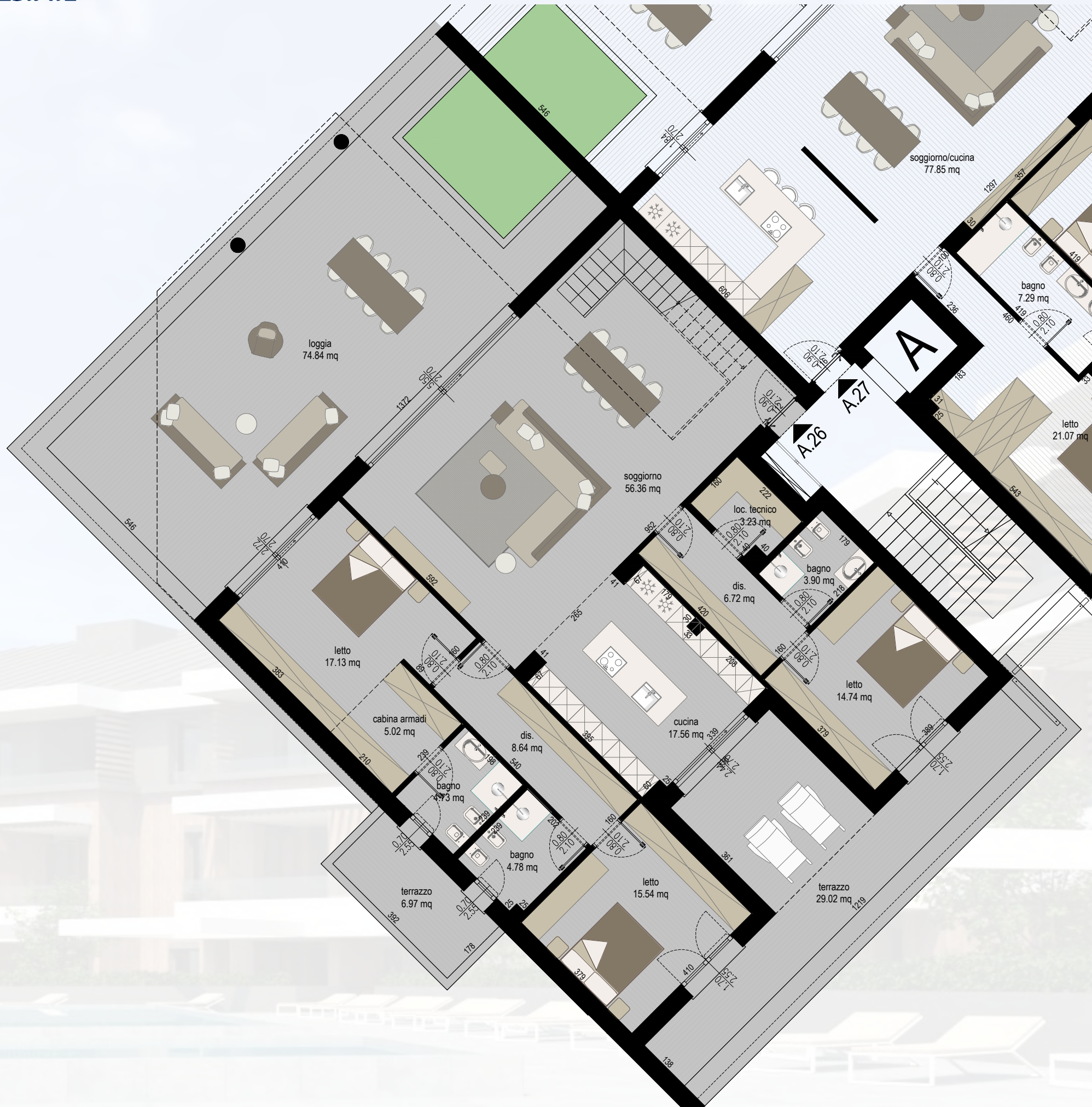
PIANO PRIMO

SCALA 1:100

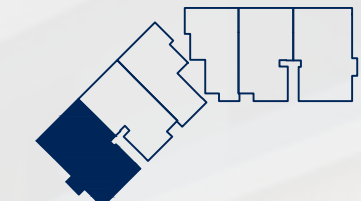
AGG. 07 GIUGNO 2023

ALLOGGIO A.26

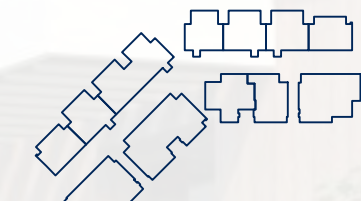
superficie commerciale: 363.22 mq
 alloggio: 191.06 mq x 100% = 191.06 mq
 port/terr.: 166.39 mq x 50% = 83.19 mq
 terr. scop.: 127.23 mq x 30% = 38.17 mq
 sott. h>180: 46.56 mq x 75% = 34.92 mq
 sott. h<180: 52.93 mq x 30% = 15.88 mq



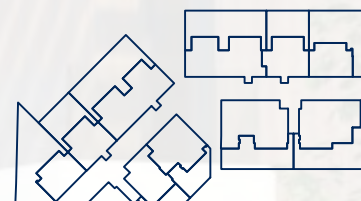
PIANO ATTICO



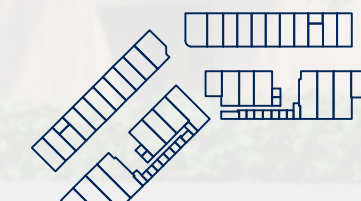
PIANO SECONDO



PIANO PRIMO



PIANO TERRA



PIANO INTERRATO



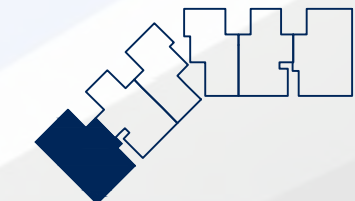
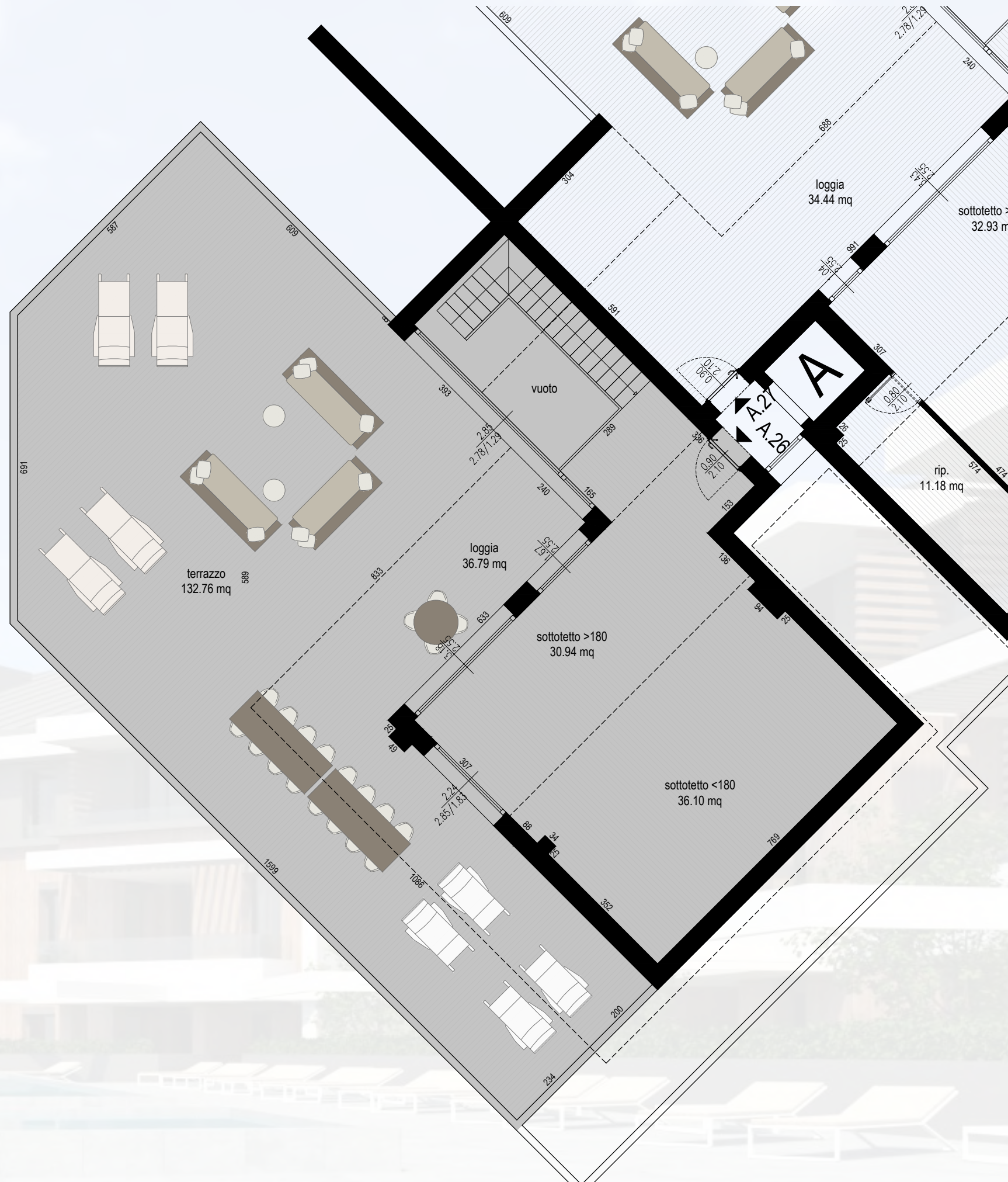
PIANO SECONDO

SCALA 1:100

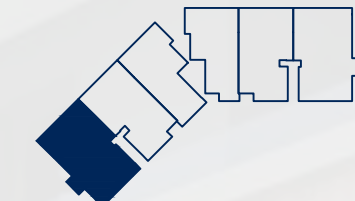
AGG. 07 GIUGNO 2023

ALLOGGIO A.26

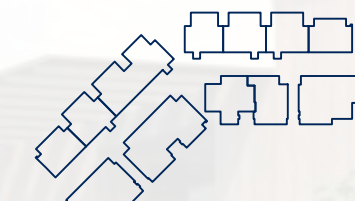
superficie commerciale: 363.22 mq
 alloggio: 191.06 mq x 100% = 191.06 mq
 port/terr.: 166.39 mq x 50% = 83.19 mq
 terr. scop.: 127.23 mq x 30% = 38.17 mq
 sott. h>180: 46.56 mq x 75% = 34.92 mq
 sott. h<180: 52.93 mq x 30% = 15.88 mq



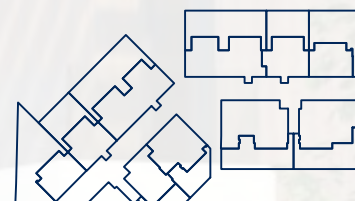
PIANO ATTICO



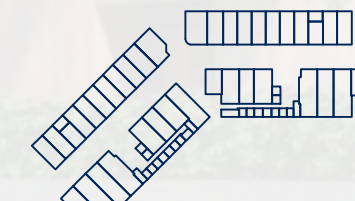
PIANO SECONDO



PIANO PRIMO



PIANO TERRA



PIANO INTERRATO



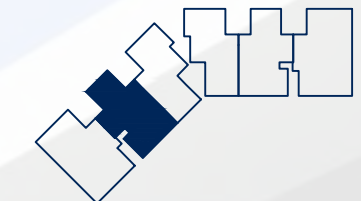
PIANO ATTICO

SCALA 1:100

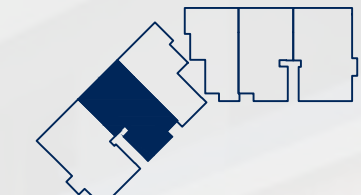
AGG. 07 GIUGNO 2023

ALLOGGIO A.27

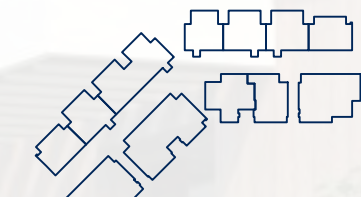
superficie commerciale: 323.56 mq
 alloggio: 172.60 mq x 100% = 172.60 mq
 port/terr.: 145.72 mq x 50% = 72.86 mq
 terr. scop.: 73.15 mq x 30% = 21.94 mq
 sott. h>180: 46.77 mq x 75% = 35.08 mq
 sott. h<180: 70.26 mq x 30% = 21.08 mq



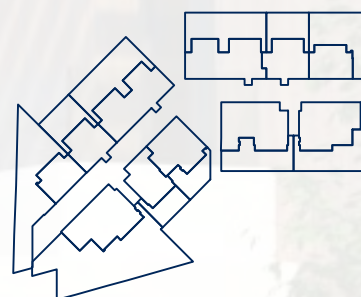
PIANO ATTICO



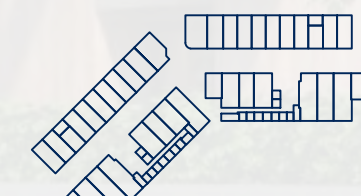
PIANO SECONDO



PIANO PRIMO



PIANO TERRA



PIANO INTERRATO



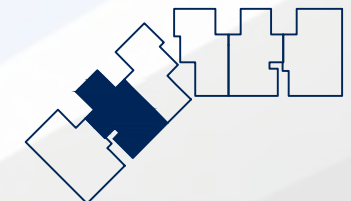
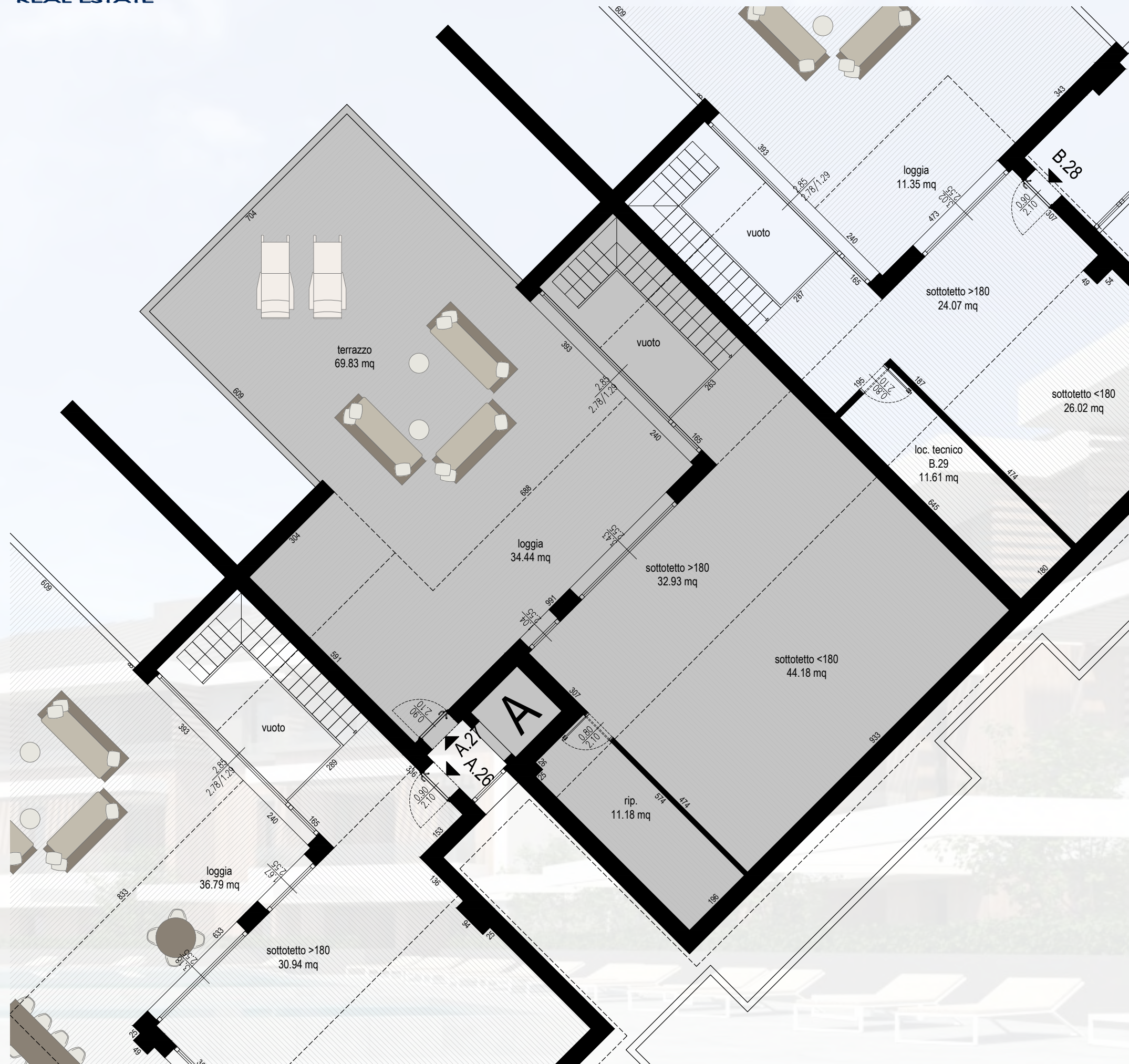
PIANO SECONDO

SCALA 1:100

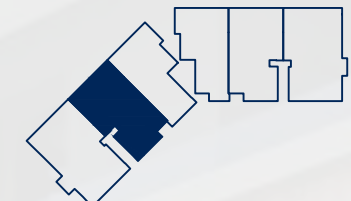
AGG. 07 GIUGNO 2023

ALLOGGIO A.27

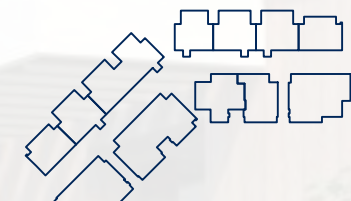
superficie commerciale: 323.56 mq
 alloggio: 172.60 mq x 100% = 172.60 mq
 port/terr.: 145.72 mq x 50% = 72.86 mq
 terr. scop.: 73.15 mq x 30% = 21.94 mq
 sott. h>180: 46.77 mq x 75% = 35.08 mq
 sott. h<180: 70.26 mq x 30% = 21.08 mq



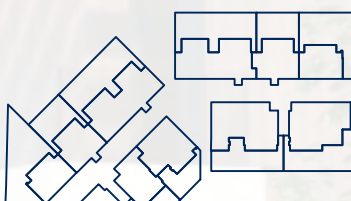
PIANO ATTICO



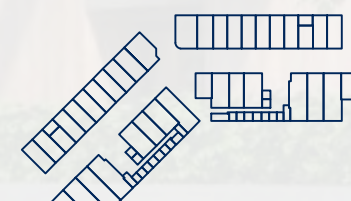
PIANO SECONDO



PIANO PRIMO



PIANO TERRA



PIANO INTERRATO



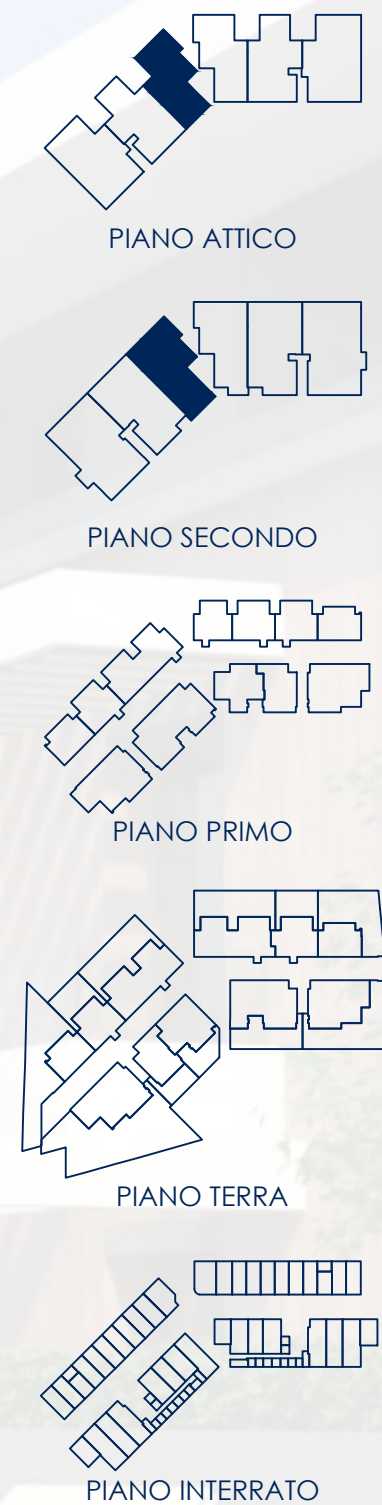
PIANO ATTICO

SCALA 1:100

AGG. 07 GIUGNO 2023

ALLOGGIO B.28

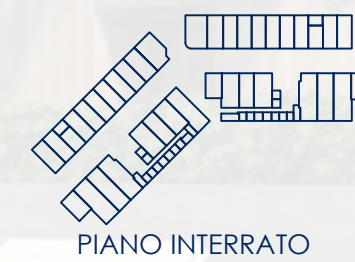
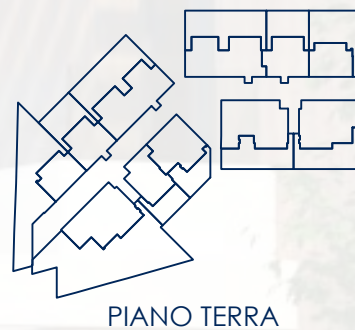
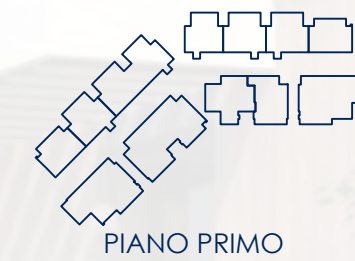
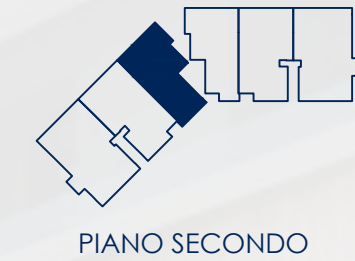
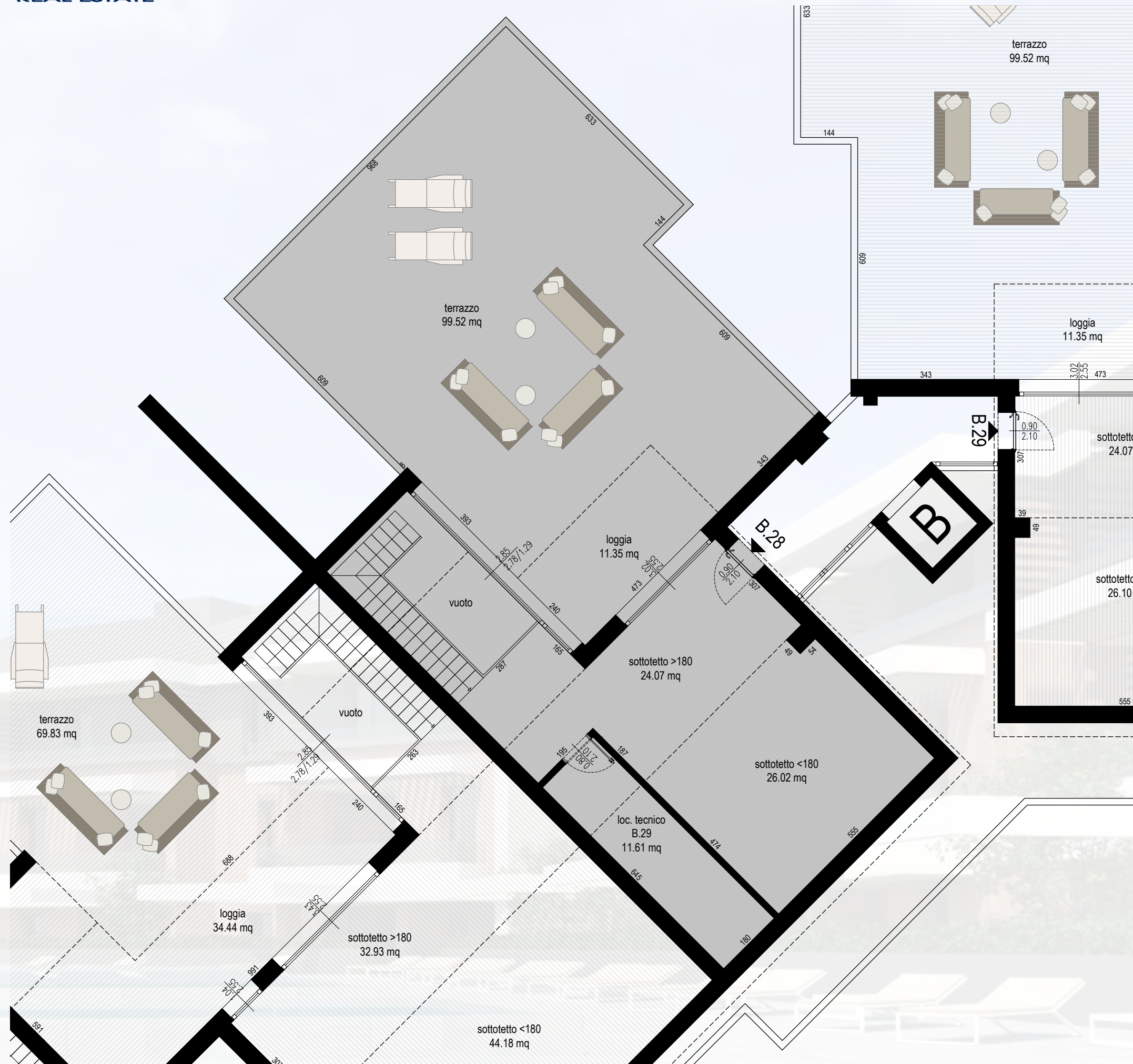
superficie commerciale: 276.51 mq
 alloggio: 146.38 mq x 100% = 146.38 mq
 port/terr.: 104.15 mq x 50% = 52.08 mq
 terr. scop.: 106.17 mq x 30% = 31.85 mq
 sott. h>180: 41.29 mq x 75% = 30.96 mq
 sott. h<180: 50.80 mq x 30% = 15.24 mq



PIANO SECONDO
 SCALA 1:100
 AGG. 07 GIUGNO 2023

ALLOGGIO B.28

superficie commerciale: 276.51 mq
 alloggio: 146.38 mq x 100% = 146.38 mq
 port/terr.: 104.15 mq x 50% = 52.08 mq
 terr. scop.: 106.17 mq x 30% = 31.85 mq
 sott. h>180: 41.29 mq x 75% = 30.96 mq
 sott. h<180: 50.80 mq x 30% = 15.24 mq



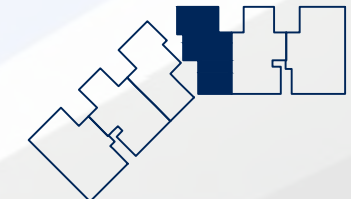
PIANO ATTICO

SCALA 1:100

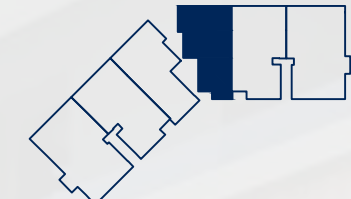
AGG. 07 GIUGNO 2023

ALLOGGIO B.29

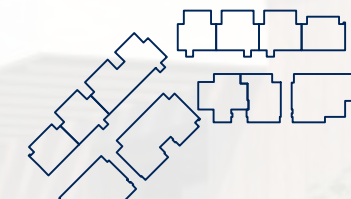
superficie commerciale: 274.54 mq
 alloggio: 146.38 mq x 100% = 146.38 mq
 port/terr.: 98.08 mq x 50% = 49.04 mq
 terr. scop.: 109.72 mq x 30% = 32.92 mq
 sott. h>180: 41.29 mq x 75% = 30.96 mq
 sott. h<180: 50.80 mq x 30% = 15.24 mq



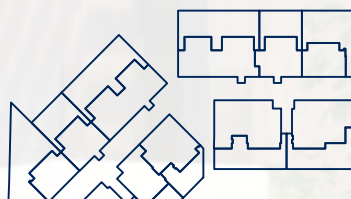
PIANO ATTICO



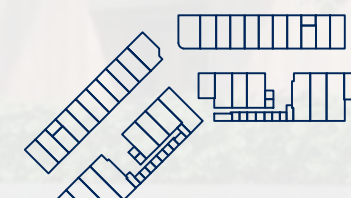
PIANO SECONDO



PIANO PRIMO



PIANO TERRA



PIANO INTERRATO



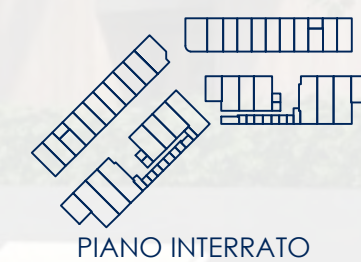
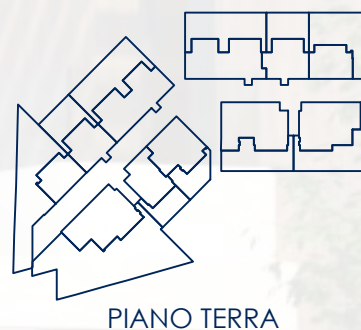
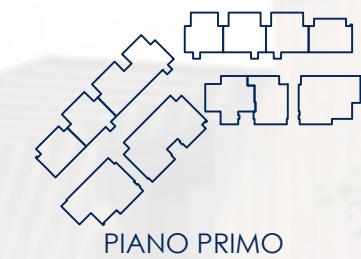
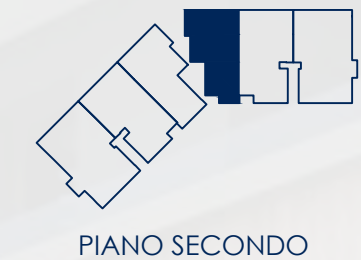
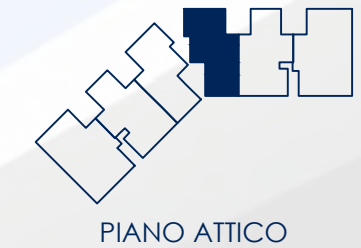
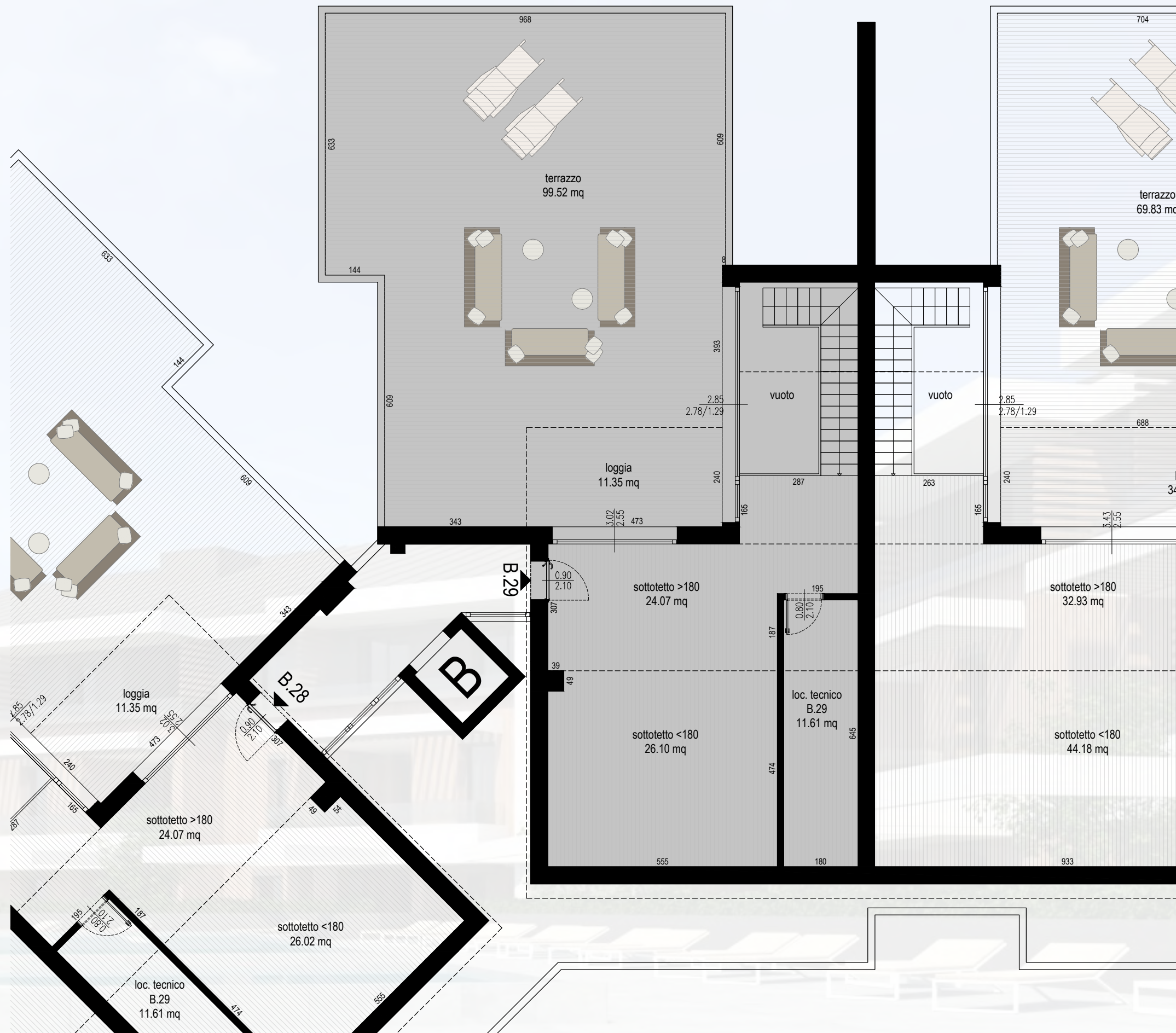
PIANO SECONDO

SCALA 1:100

AGG. 07 GIUGNO 2023

ALLOGGIO B.29

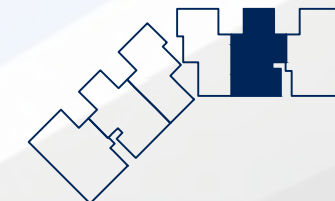
superficie commerciale: 274.54 mq
 alloggio: 146.38 mq x 100% = 146.38 mq
 port/terr.: 98.08 mq x 50% = 49.04 mq
 terr. scop.: 109.72 mq x 30% = 32.92 mq
 sott. h>180: 41.29 mq x 75% = 30.96 mq
 sott. h<180: 50.80 mq x 30% = 15.24 mq



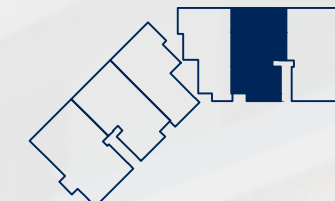
PIANO ATTICO
 SCALA 1:100
 AGG. 07 GIUGNO 2023

ALLOGGIO C.30

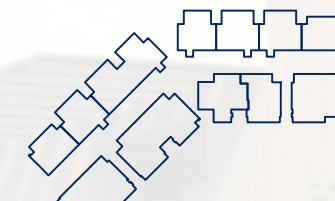
superficie commerciale: 323.56 mq
 alloggio: 172.60 mq x 100% = 172.60 mq
 port/terr.: 145.72 mq x 50% = 72.86 mq
 terr. scop.: 73.15 mq x 30% = 21.94 mq
 sott. h>180: 46.77 mq x 75% = 35.08 mq
 sott. h<180: 70.26 mq x 30% = 21.08 mq



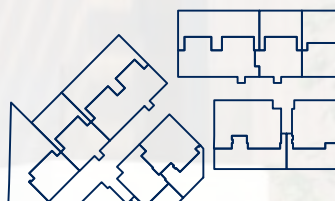
PIANO ATTICO



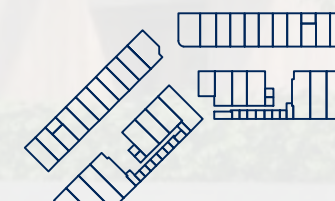
PIANO SECONDO



PIANO PRIMO



PIANO TERRA



PIANO INTERRATO



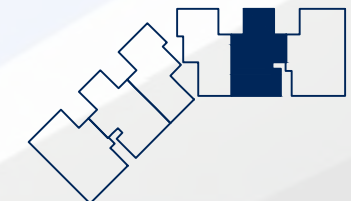
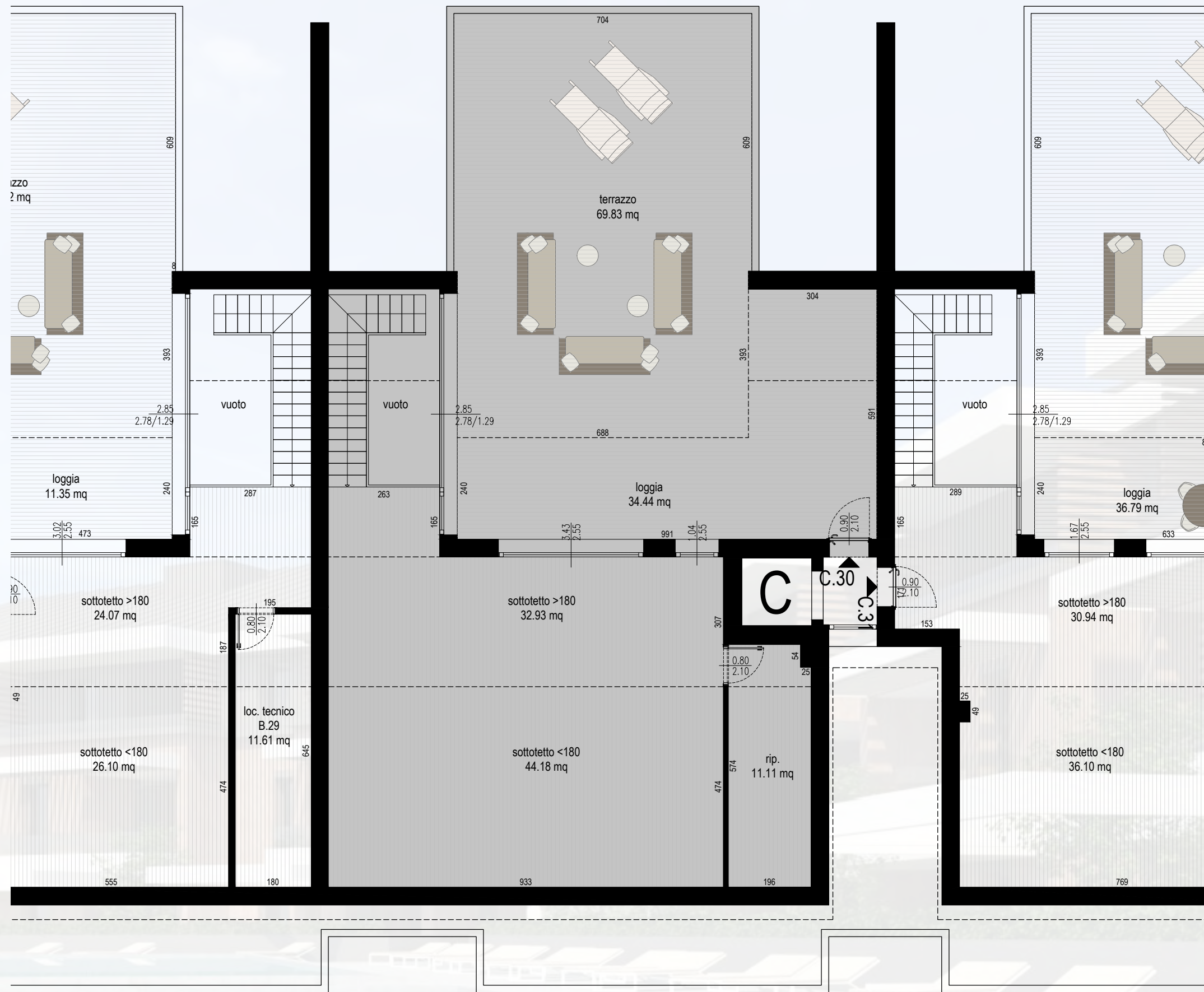
PIANO SECONDO

SCALA 1:100

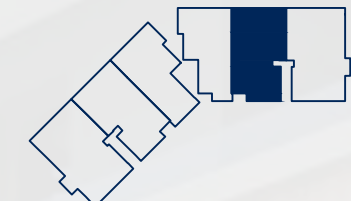
AGG. 07 GIUGNO 2023

ALLOGGIO C.30

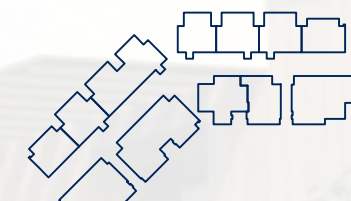
superficie commerciale: 323.56 mq
 alloggio: 172.60 mq x 100% = 172.60 mq
 port/terr.: 145.72 mq x 50% = 72.86 mq
 terr. scop.: 73.15 mq x 30% = 21.94 mq
 sott. h>180: 46.77 mq x 75% = 35.08 mq
 sott. h<180: 70.26 mq x 30% = 21.08 mq



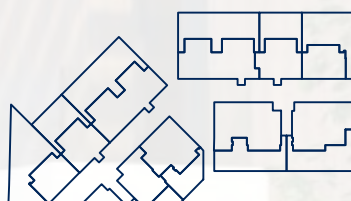
PIANO ATTICO



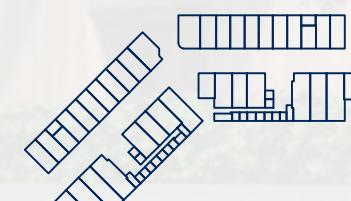
PIANO SECONDO



PIANO PRIMO



PIANO TERRA



PIANO INTERRATO



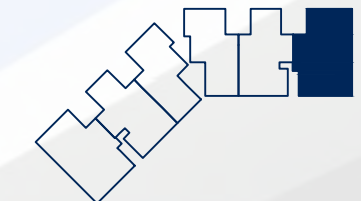
PIANO ATTICO

SCALA 1:100

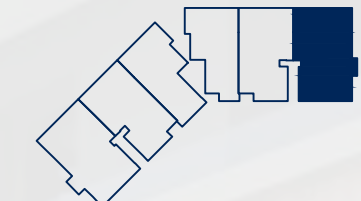
AGG. 07 GIUGNO 2023

ALLOGGIO C.31

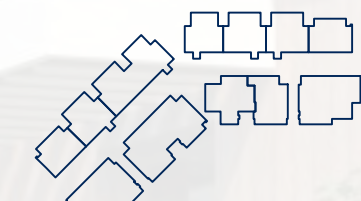
superficie commerciale: 364.06 mq
 alloggio: 188.63 mq x 100% = 188.63 mq
 port/terr.: 165.47 mq x 50% = 82.73 mq
 terr. scop.: 139.65 mq x 30% = 41.90 mq
 sott. h>180: 46.56 mq x 75% = 34.92 mq
 sott. h<180: 52.93 mq x 30% = 15.88 mq



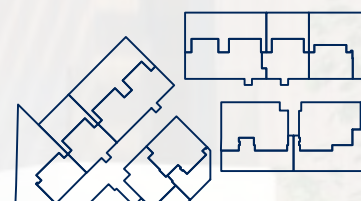
PIANO ATTICO



PIANO SECONDO



PIANO PRIMO



PIANO TERRA



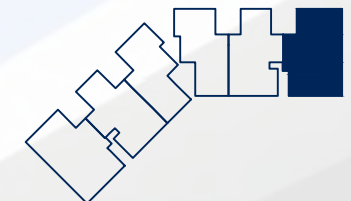
PIANO INTERRATO



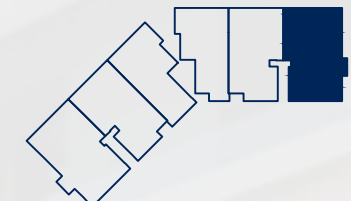
PIANO SECONDO
 SCALA 1:100
 AGG. 07 GIUGNO 2023

ALLOGGIO C.31

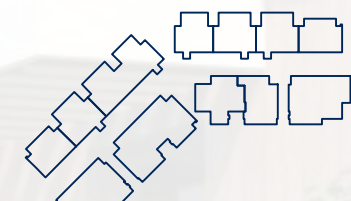
superficie commerciale: 364.06 mq
 alloggio: 188.63 mq x 100% = 188.63 mq
 port/terr.: 165.47 mq x 50% = 82.73 mq
 terr. scop.: 139.65 mq x 30% = 41.90 mq
 sott. h>180: 46.56 mq x 75% = 34.92 mq
 sott. h<180: 52.93 mq x 30% = 15.88 mq



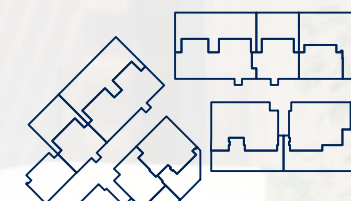
PIANO ATTICO



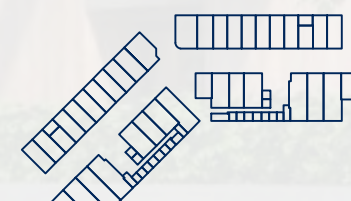
PIANO SECONDO



PIANO PRIMO



PIANO TERRA



PIANO INTERRATO



PIANO ATTICO

SCALA 1:100

AGG. 07 GIUGNO 2023